



.

,

”

“

()

, 2014.



UNIVERSITY OF NIŠ
FACULTY OF ECONOMICS



MSc .

**SUSTAINABLE DEVELOPMENT OF AGRICULTURE
AND TOURISM, WITH SPECIAL REFERENCE TO THE
POSSIBILITY OF THE NATURE PARK "GOLIJA"**

(doctoral dissertation)

Niš, in 2014.

:

. ,
,

:

1. _____

2. _____

:

The scientific contribution of the doctoral dissertation

From a comprehensive analysis of the dissertation, we can distinguish the following relevant scientific- theoretical- methodological and applicative contributions of dissertation:

- *Performed an objective assessment of the relevant factors that determine the policy of sustainable development of agriculture and tourism, with special references on the implementation of sustainable development in protected natural areas.*
- *Presentation of the theoretical and methodological concept of sustainable development of agriculture and tourism, which implicitly connects more current priorities are also contribution of this thesis.*
- *The contribution of the dissertation is made in the comparison and critical assessment of various sustainable strategies tailored to the specifics of rural areas, aimed to activating endogenous development and the establishment of effective and sustainable rural economy.*
- *The contribution of the dissertation is also reflected in the verification of the effects arising from the implementation of specific measures and policy instruments for sustainable development, through monitoring and evaluation of programs and models to support sustainable development of agriculture and tourism, especially in developed countries. Exposed experiences of European countries can be useful in defining the strategic direction and priorities for sustainable development in Serbia, especially in the Nature Park "Golija".*
- *The dissertation presents the key elements and factors of the revitalization and sustainable development of the Nature Park "Golija".*
- *It is reasonable to expect that the scientific and practical results of this research effort will be reflected in a significant enriching the literature in this area and contributing to economic science.*

” ,
” ,

(: .)

**STATEMENT OF MENTOR’S CONSENT FOR SUBMISSION OF COMPLETED
DOCTORAL DISSERTATION**

Hereby, I declare that I agree that the candidate **MIROSLAV MIRKOVI** , can submit completed doctoral dissertation to the officer for postgraduate education of the Faculty under the name of: **SUSTAINABLE DEVELOPMENT OF AGRICULTURE AND TOURISM, WITH SPECIAL REFERENCE TO THE POSSIBILITY OF THE NATURE PARK “GOLIJA“** for the purpose of its evaluation and defense.

(Mentor’s signature: PhD. Snežana Djeki)

M. MUPKOBUT

, 06.06.2014.

S T A T E M E N T

With due material and moral responsibility, hereby I declare that the doctoral dissertation is the result of personal scientific research and that the references used are cited adequately without use of ideas, results and texts of other authors in the way that hides the source's originality. I take the full responsibility for conducted research, analysis, data interpretation and conclusions.

Signature:

M. MUPKOBUT

Niš, 06.06.2014

’ ” “

’

’

’

’

—

.

.

’

’

’

.

’

’

.

’

.

II III

’

’

’

’

.

’

’

’

”

”

’

’

’

”

“

:

’

’

’

”

“

:

:

: 502.131.1(497.11)

SUSTAINABLE DEVELOPMENT OF AGRICULTURE AND TOURISM, WITH SPECIAL REFERENCE TO THE POSSIBILITY OF THE NATURE PARK "GOLIJA"

Sustainable development of agriculture and tourism is primarily based on the diversification of the rural economy, preservation of rural values with protecting the environment and rural landscapes, restoration of social, cultural and institutional-management functions of rural communities. Agriculture and tourism as complex activities achieve the strongest correlation in the spatial plan. The complexity of touristic products, that point to environmentally responsible journeys, support the preservation of authentic material and social values and have a beneficial impact on the local population are closely related and to the activities within the agriculture. Their interconnections can be seen through the direct and indirect impacts and benefits, diversification of activities at the national, regional and local level.

Nature parks are in full conformity with the principles of sustainable development, because they are aimed to promote meeting the needs of present generations while respecting the principle that future generations can use the benefits of the same area. Under the protection of 2nd and 3rd level regime, nature park can accommodate facilities for livestock development, tourism and recreation and provide use of agricultural land and livestock in the stable, traditional way, which is of great economic and social importance for the sustainable development of underdeveloped areas. Starting from the place and importance of sustainable agriculture and tourism, the subject of scientific research in the dissertation is just the process of formulating, evaluating and implementation of strategies, policies and integrated model of sustainable agriculture and tourism with special reference to the Nature Park "Golija". In this sense, the dissertation deals with the significance of promoting and developing sustainable agriculture and tourism, as well as monitoring and evaluation of programs which support the developmental opportunities of the Nature Park "Golija".

Keywords: *sustainable development, agricultural production, tourism, Nature Park "Golija".*

Scientific field: Economics

Field of Academic Expertise: Economic Development and Economic Policy

UDC number: 502.131.1(497.11)

I

D)

1.		8
2.		16
3.		24
4.		30
5.	21 -	
21.		38
6.		43

II)

1.		48
2.		54
3.		60

II

III)

1.		66
----	--	----

2. LEADER		75
3.		83
4.		87
5.		96
6.		101

IV)

1.		110
2. SARD	–	118
3.		122

V)

1.		129
2.		136
3.		141
4.		147
5.		153

III

” “

VI)

“ “

1.	” “	157
2.	” “	169
3.		178

4.		185
5.	, ,	195
6.		203

VII)

1.		210
2.	<i>Cost-benefit</i>	216
3.	SWOT – ” “	225
4.	-	233
5.	” “	238

VIII)

1.	” “	245
2.	” “	250
3.	” “	260
		269
		279

“ ”
(),
“ ”
“ ”
“ ”

•
•
•

“ ”
“ ”
“ ”

;

1)

2)

3)

4)

5)

6)

7)

1987.

21,

190

21,

LEADER

LEADER

ISPA, SAPARD CARDS

IPA,

: PHARE,

Pre-accession Assistance

5

: (1)

IPA (*Instrument for*

; (2)

; (3)

; (4)

(5)

(IPARD).

”

“;

- SARD (*Sustainable agriculture and rural development*).

SARD-

. FAO

2007.

SARD

, . SARD- ,

FAO

270

135

77%

” ” “

” “ ”

” “

，

， 2001. ，

” “ ”

：

， ， ，

75.126 .

” ” ， ，

-

·

， ， ，

·

” “

，

·

- (cost-benefit).

， ， ，

·

，

cost-benefit

” “， SWOT

， ” ”

” “

” “

·

”

“

•

”

“

,

,

•

•

,

I

D)

1.

Thomas R. Malthus

"

" 1798.

Malthus

Malthus

19. ¹ .

2.) (, ,)

E. J. Mishana,

per se.

XX

¹ Malthus, T. (1798) *An Essay on the Principle of Population*, printed in St. Paul's church, London, Chapter II.

² Hussen, A. (2004) *Principles of Environmental Economics*, Rutledge, New York, p. 221.

³ . (2006)

52-53.

⁴ Mishan, E. J. (1967) *The Costs of Economic Growth*, Penguin Books Ltd, London.

05.06. 16.06.1972.

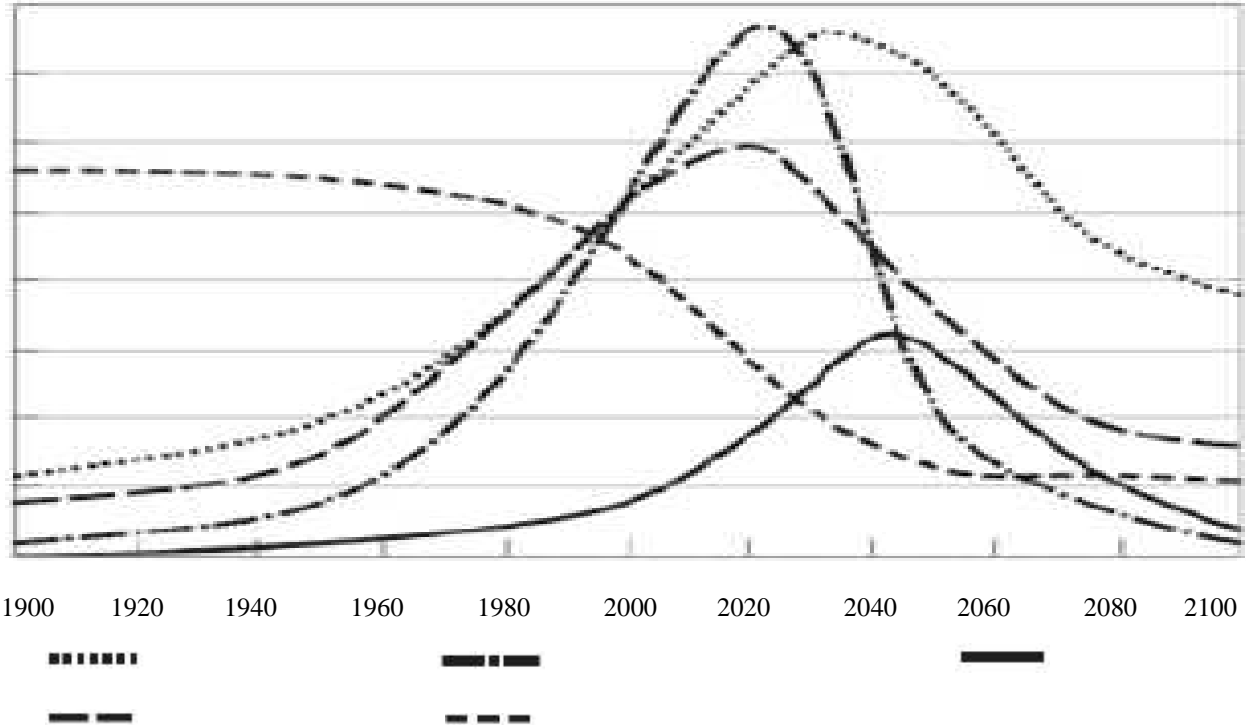
21.

⁵ *Stockholm Declaration* (1972) United Nations Conference on the Human Environment, Stockholm, principle 1.

⁶ Meadows, D. H., Meadows, D. L., Randers, J., Behrenes, W.W. (1972) *The Limits to Growth*, Universe Books, New York.

(I-1).

I-1. ” “



： ， (2009)
56, : Meadows, D. H., Meadows, D. L., Randers, J., Behrenes, W.W. (1972) *The Limits to Growth*, Universe Books, New York, p. 124.

” “
” “

21. ，

(*International Union for Conservation of Nature* – IUCN), 1980.

Development - WCED)

*(World Commission on Environment and
1983.*

Gro Harlem Bruntland,

Bruntland

1987.

Future),

“ *(Our Common*

⁷ *World Conservation Strategy (WCS): Living Resource Conservation for Sustainable Development, (1980) IUCN, section 7.*

⁸ *Report: Our Common Future, (1987) World Commission on Environment and Development, Oxford University Press, Oxford, Chapter 2.*

Bruntland

. *Mohan Munasinghe,*

10.

- :
- ;
- :

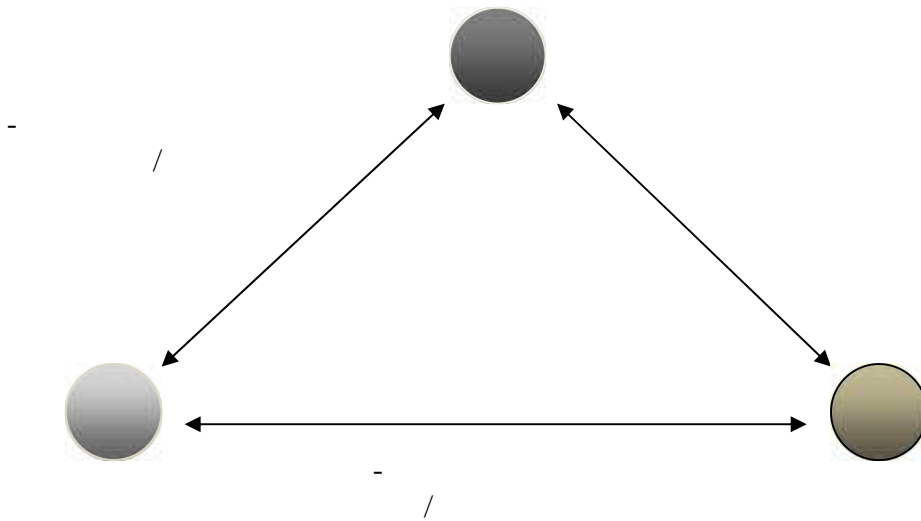
(I-2.).

⁹ Munasinghe, M. (2002) *The sustainomics trans-disciplinary meta-framework for making development more sustainable*, Journal „Sustainable Development”, Vol 5, p. 138.

¹⁰ Munasinghe, M., Lutz, E. (1991) *Environmental – Economic Evaluation of Projects and Policies for sustainable development*, World Bank Working Paper, No. 42., Washington, D.C., USA.

I-2.

•
•
•



•
•
•

: Munasinghe, M. (1993) *Environmental Economics and Sustainable Development*, World bank, Washington, p. 2.

, (),
(,
) (,
) . - ,

12.

. *Sandra Batie*

13.

- ;
- ;
- ;
- , ,
- . , ,

¹² Haq, M. (1995) *Reflections on Human Development*, Oxford University Press, Oxford, p.76.

¹³ Batie, S. Sandra, (1990) : , . 7-8, . 269-270 (., Sandra S. B., (1989) *Sustainable development: Challenges to the profession of agricultural economics*, American journal of agricultural economics, No. 5).

2.

Bruntland

80-

, 03.06. 14.06.1992.

108

10.000

172

Bruntland

15.

¹⁴ , , , , . (2001)

, . 65.

¹⁵ www.un.org/esa/dsd/resources/res_docukeyconf_eartsumm.shtml

-
-
-
-

21,

,

,

.

,

..”

“

27

.

21 -

21. ,

.

,

.

.

,

1997.

31.

1993.

.

“

”

(Commission on Sustainable Development- CSD),

,

,

.

21,

,

.

1994.

, 1997.

+5,

16.

1999.

2001.

1992.

1997.

– „Sustainable Europe for a Better World“,

17.

¹⁶ Khor, M. (1997) *Review and appraise the implementation of Agenda 21*, Earth Summit +5, Special Session of the General Assembly, New York.

¹⁷ *Sustainable Europe for a Better World: A European Union Strategy for Sustainable Development* (2001) Commission's proposal to the Gothenburg European Council.

„ „
“
“
– „Towards a Global Partnership for Sustainable Development“,

2002.

2000,

1997.

¹⁸.

, 2000.

„ +10“,

2002.

60.000

100

8.000

¹⁹.

21

1992.

¹⁸ *Towards a Global Partnership for Sustainable Development* (2002) Commission of the European Communities, Brussels, p.15.

¹⁹ www.unicef.org/newsline/02pr52wssd

2005. ²⁰.

21.

-
-
-

21,

).

22.

IV

²⁰ *Plan of implementation of the world summit on sustainable development* (2002) The World Summit on Sustainable Development, Johannesburg, South Africa, Chapter XI, p. 61.

²¹ www.johannesburgsummit.org/documents

²² *Plan of implementation of the World Summit on Sustainable Development* (2002) The World Summit on Sustainable Development, Johannesburg, Chapter I-IX.

a)

2015.

;
,

)

,

,

-

,

,

;

)

,

,

;

)

,

,

,

,

,

,

;

)

;

)

;

)

,

;

²³ Ibid, Chapter IV – Protecting and managing the natural resource base of economic and social development, paragraph 40.

) , ,

; , ,

)

, ,

;

)

.

,

;

)

,

,

;

)

;

)

,

;

)

,

,

;

)

;

)

;

)

, 2005.

2006.

2017.

9. 2008.

2017.

24.

1)

2)

3)

4)

5)

²⁴

57/2008, II, .8-9.

(2008)

6) , .
 , 20. 22. 2012. ,
 ,
 +20. 50.000 ,
 130 190 ,
 +20
 , ” “ ,
 ,
 ,
 ,
 , 25 .

3.

,
 .
 26.

²⁵ *The future we want* (2012) Outcome document The Rio+20 Conference UN on sustainable development, Rio de Janeiro, p. 25.
²⁶ Perman, R., Ma, Y., and McGilvray, J. (1996) *Natural resource and Environmental Economics*, London, Longman, p. 86.

- 1.
- 2.
- 3.
- 4.
- 5.
- 6.

. *Robert Solow* ,

27 .

Bruntland .

John Hartwick

Hartwick- .

²⁷ Solow, R. (1974) *The Economics of Resources or the Resources of Economics*, American Economic Association, American Economic Review, Vol. 64., No. 2, p. 1-13.

Solow je

Hartwick-

Hartwick-Solow

(, , - , , .)

(, , .)

29.

“30

Hartwick-Solow

(Hartwick-Solow)

Hartwick-Solow

²⁸ Hartwick, J. M. (1977) *Intergenerational equity and the Investing of Rents from Exhaustible Resources*, American Economic Review, No. 67, American Economic Association, p. 972-974.

²⁹ Solow, R. (1986) *On the Intergenerational Allocation of Resources*, Scandinavian Journal of Economics, Vol. 88, No. 1, p. 144.

³⁰ “ “

31.

1.

;

2.

3.

;

4.

Solow

³¹ Daly, H. (1990) *Toward Some Operational Principles of Sustainable Development*, Ecological Economics, Elsevier, No. 2, p. 3.

32.

33.

- a) , . ;
-) , , ;
-) , ,
-) , ,

(Q)³⁴:

$$Q = Q(L, K_n, K_h)$$

n⁺ h'

(K_n)

(K_h).

³² Solow, R. (1992) *An Almost Practical Step toward Sustainability*, Invited Lecture on the occasion of the 40th anniversary of Resources for the future, Washington, DC.

³³ , . (2002) , . 19.

³⁴ *Ibid*

n h

35

Robert Repetto

36

ex post,

37

a

³⁵ (2000)

³⁶ Repetto, R. (1986) *World Enough and Time: Successful Strategies for Resource Management*, New Haven, Connecticut: Yale University Press.

³⁷ (2002)

.21.

4.

,
,
”
“
”
“ 27 , 38.
• ;
• , ;
• , ;
• , ;
• , ;
• , ;
• , ;
• , ;
• , ;

³⁸ *Rio declaration on environment and development* (1992) UN Conference on environment and development, Rio de Janeiro.

2000.

189

XXI

³⁹.

³⁹ *United Nations Millennium Declaration* (2000) Values and principles, New York - Article I.

40.

1.
 - 1.1. 1990-2015. 1\$
 - 1.2.
 - 1.3. 1990-2015.
2.
 - 2.1. 2015.
3.
 - 3.1. 2005. 2015.
4.
 - 4.1. 1990 2015.
5.
 - 5.1. 1990-2015.
 - 5.2. 2015.
6.
 - 6.1. 2010. /
 - 6.2.
- 7.

⁴⁰ <http://mdgs.un.org/unsd/mdg/data>

7.1.

7.2.

7.3.

7.4. 2020.

100

8.

8.1.

8.2.

8.3.

8.4.

8.5.

8.6.

2005.

“

41.

I)

II)

III)

IV)

⁴¹ *Draft Declaration on Guiding Principles for Sustainable Development* (2005) Commission of the European communities, Brussels, p. 4.

□

□

□

□

□

□

⁴² *Ibid*, p. 5-6.

□

, ,
,

, .

□

, , .

□

, .

□

, ,
, .

43.

1)

;

, .

2)

-

;

⁴³

57/2008, , .10.

(2008)

3)

,
.
.
,
;
,
,
,
.

4)

.
;

,
,

5)

.
.
;
,
,

6)

-
,
.
;
,

7)

/
;
,
,

8)

5.

21-

21.

21

21.

21

44

21

21.

190

21.

21

45.

I)

II)

III)

IV)

21

40

21

⁴⁴ *Agenda 21* (1992) United Nations Conference on Environment and Development (UNCED) held in Rio de Janeiro, Brazil, *Preamble*.

⁴⁵ *Ibid*, *Table of Contents*.

21

46.

○

○

○

21

8,5

2025.

, 83 %

(sustainable agriculture and rural development-SARD).

21,

SARD-

SARD-

⁴⁶ *Agenda 21* (1992) United Nations Conference on Environment and Development (UNCED) held in Rio de Janeiro, Brazil.

⁴⁷.

A.

⁴⁷ *Ibid*, Chapter 14.

know-how

21 ;
: , , ,
, , , ,
, , , ,
.

21
. 28 21,
, , , ,
, , , ,
, , , ,
48
21
,
28
,

6.

28 21,
21, ,
21.

⁴⁸ *Ibid*, Chapter 28.

(I-3.).

I-3.

: *The Local Agenda 21 Planning Guide: An Introduction to Sustainable Development Planning* (1996) The International Council for Local Environmental Initiatives (ICLEI) and United Nations Environment Programme (UNEP), Toronto, Canada, p. 8.

⁴⁹Ibid

top-down ()

50.

- ; ;
 - ; ;
 - ; ;
 - ; ;
 - ; ;
 - ; ;
- ” “ ()
- ” “ ()

⁵⁰ *The Local Agenda 21 Planning Guide: An Introduction to Sustainable Development Planning* (1996) The International Council for Local Environmental Initiatives (ICLEI) and United Nations Environment Programme (UNEP), Toronto, Canada, p.98.

-
-
-

51.

52.

53.

1.

⁵¹ *Ibid*
⁵² Gercheva, D. (2003) *Local sustainable development planning*, UNDP, Bratislava, p. 20.
⁵³ *Ibid*, p. 59.

2.

;

3.

,

4.

.

· ,

·

·

,

,

”

“

,

54

·

·

” “ ()

·

21,

,

IPA

I

-

,

,

54 , . (2004) , .97.

21:

21.

(Municipalities Support Programme IPA 2007)

22

/ 55.

II)

1.

⁵⁵ www.kv-rda.org/decembar10.htm

56.

57.

- I) — ;
- II) —
- III) —

I

(International Union for Conservation of

Nature - IUCN)

58.

59.

-
-
-

56

(2009) „

“, 36/2009,

4.

57

(1992) „

“, 30/92, 2.

⁵⁸ Lucas, P., (1994) *Protected areas management categories*, International Union for Conservation of Nature - IUCN, Gland, Switzerland, p. 7.

⁵⁹ *Ibid*

-
-
-
-
-
-

(IUCN)

60.

-
-
-
-
-
-
-

61.

⁶⁰

88/2010 91/2010- .. , 27.

⁶¹ *Ibid*, 34.

(2009) „

“, 36/2009,

528.691 5,98 %
2021.

463 12%
(II-1.).

II-1.

	5
	17
	16
	69
	1
	316
	39
	463

: www.zzps.rs/novo/zastita_prirode_osnovni_podaci

I, II III . I

II

(, ,) ,

30

III

62

⁶²
3-5.

(2012) „

“, 31/2012,

63.

⁶³

88/2010 91/2010- .. , 52.

(2009)

„*Natura*

, 36/2009,

53

2000“

26.000

18%

1,2 2,2

64.

2.

E

TEV).

“ (Total economic value-

65.

⁶⁴ *Environment: Celebrating 20 years of EU nature protection* (2012) European Commission – Press release, p. 2.

⁶⁵ Pearce, D. (1992) *Economic valuation and the natural world*, Background paper for World development report 1992, Centre for social and economic research on the global environment, London, p. 8.

■ _____

■ _____
to pay - WTP)

■ _____

(*willing*)

(II-1).

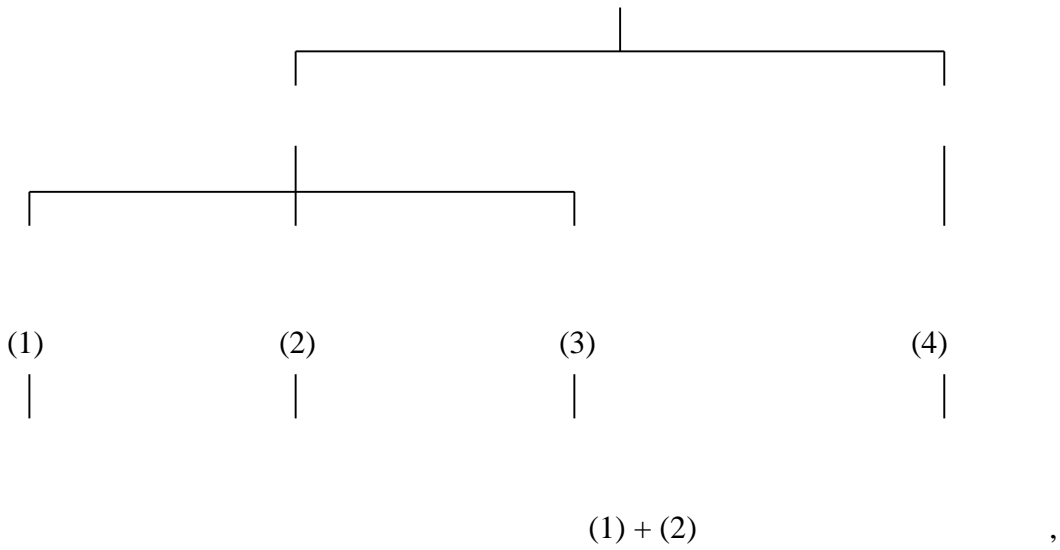
),
)

(

(

e

II-1:



: Pearce, D. (1992) *Economic valuation and the natural world*, Background paper for World development report 1992, Centre for social and economic research on the global environment, London, p. 9.

$$\begin{aligned}
 & \text{66.} \\
 & = \quad + \quad + \\
 & \quad + \\
 & \quad ,
 \end{aligned}$$

⁶⁶ *Ibid*, p. 11.

67:

-
-
-
-
- ()
-
-

to pay)

(willing

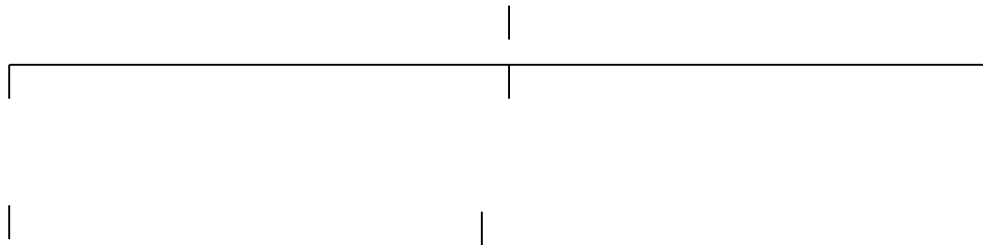
⁶⁷ Phillips, A. (1998) *Economic Values of Protected Areas*, The world conservation union, Gland, Switzerland, p.19

()

IUCN.

(II-2).

II-2 :



: Jungho, S., & Harrison, S. (2005) *Management Objectives and Economic Value of National Parks: Preservation, Conservation and Development*, Discussion Paper No. 337, School of Economics, The University of Queensland, p. 11.

a

3.

68

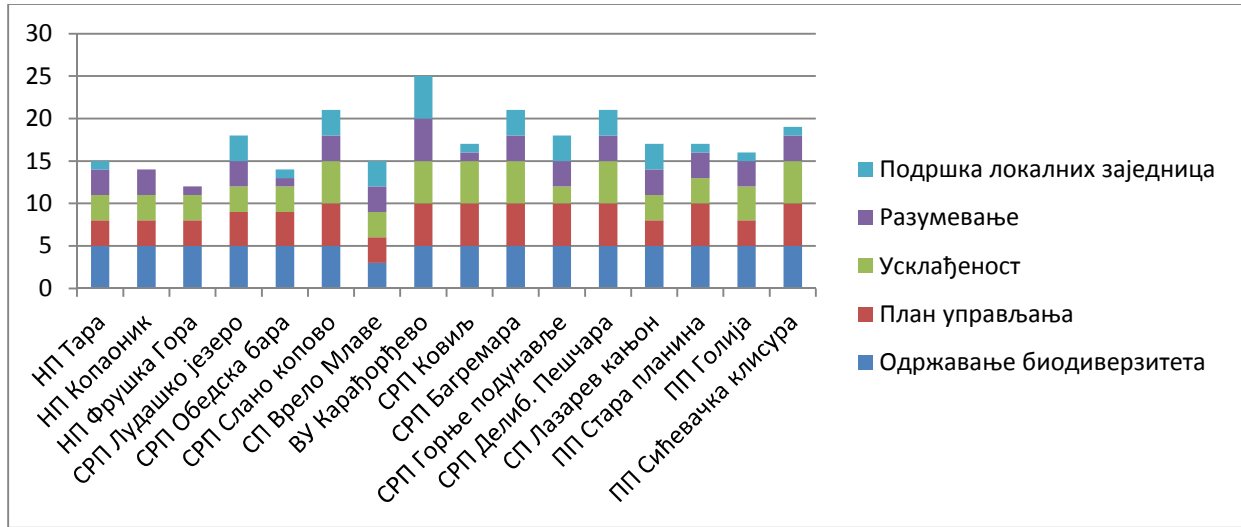
e

⁶⁸ Reed, S. M., et al. (2009) *Who's in and why? A typology of stakeholder analysis methods for natural resource management*, Journal of Environmental Management, Elsevier, p. 1934.

2009. 16

(II-1.).

II-1.



: , . (2009)

, , .21.

69.

70.

⁶⁹ , . (2003)

⁷⁰ Philips, A. (2002) *Management Guidelines for IUCN Category V Protected Areas*, IUCN, Gland, Switzerland and Cambridge UK, p. 52-53.

■ ;
 ■ ;
 ■ , ;
 ■ , ;
 ■ , , , ;
 ■ () (,) ;
 ■ () ;
 ■ () ;
 ■ ,
 ■ .
 .
 .
 .
 ” “
 ,
 .
 , ,
 124 , “ 71 .
 , 1990 .
 ” “ .
 ,
 ,
 ,
 ” “ .

71
 137.

II

III)

1.

2010.

(*Organisation for Economic Co-operation and Development*-
OECD),

OECD-a

150

, OECD

1;

1)

50%

;

2)

15% 50%

¹ *Creating rural indicators for shaping territorial policy* (1994) Organisation for Economic Co-operation and Development - OECD, Paris, p. 15.

3) , 15%

· -27, 91%

57% , 59% ,

-27, 24% 2.

· , ().

25% , 80%

- · , 25. 1957.

, 33. 3.

a.

· , ;

· , ;

· - ;

· -

· ,

· ,

· .

² *Rural Development in the European Union – Statistical and Economic Information* (2010) European Union, Directorate General for Agriculture and Rural Development, Chapter II, p.12.

³ *The Treaty establishing the European Economic Community* (1957) European Union law, Rome, Title II – Agriculture, article 33.

e e e
60- , ” “,
” “. *Sicco Mansholt*

” “
, ,
70-

4.
1983.
1985. ”
“ ”

2/3
” “
” “
5.
, 1992.

”
“

⁴ http://europa.eu/about-eu/eu-history/founding-fathers/pdf/sicco_mansholt_en.pdf
⁵ *Perspectives for the Common Agricultural Policy* (1985) Commission of the European Communities, p. 49.

set-aside

⁶.

„Cork“

1996.

”

“.

⁷:

1.

2.

3.

4.

⁶ Council Regulation (EC) No 2078/92 on agricultural production methods compatible with the requirements of the protection of the environment and the maintenance of the countryside.

⁷ The Cork declaration – a living countryside (1996) The European Conference on Rural Development, Cork, Ireland, point 1-10.

5.

. ,
(, ,
) . ” “

6.

,
,

7.

8.

. ,
,

9.

, ,
, ,

10.

. ,
” 2000“

1997. ,
” 2000“

1999.

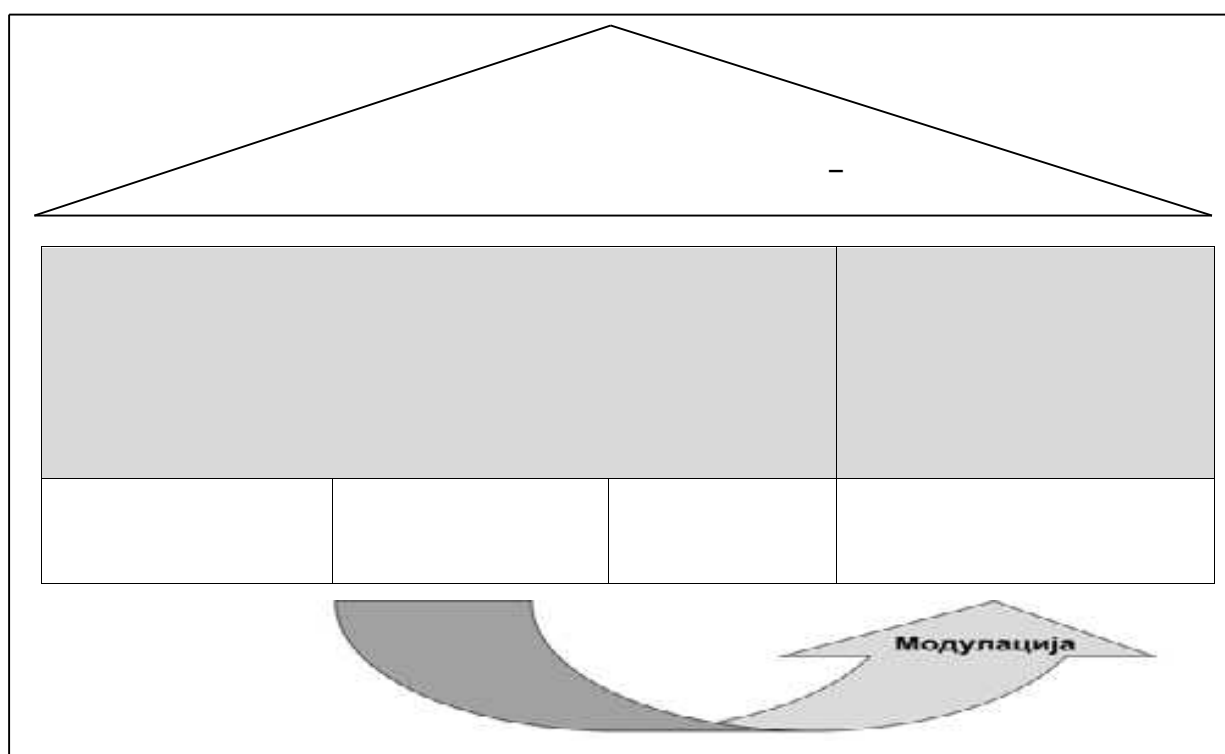
. ” 2000“

-

2000“

(III-1.).

III-1. „ 2000“ -



: Pielke M., (2009) *Community Policies for the Development of Rural Areas*, European Commission Directorate General for Agriculture and Development, Zagreb, p. 2.

„ 2000“

output

8.

2007-2013.

1698/2005.

9:

I) ;

II) ,

;

III)

„LEADER“,

2007.-2013.

(*European Agricultural Fund for Rural Development - EAFRD*), (III-

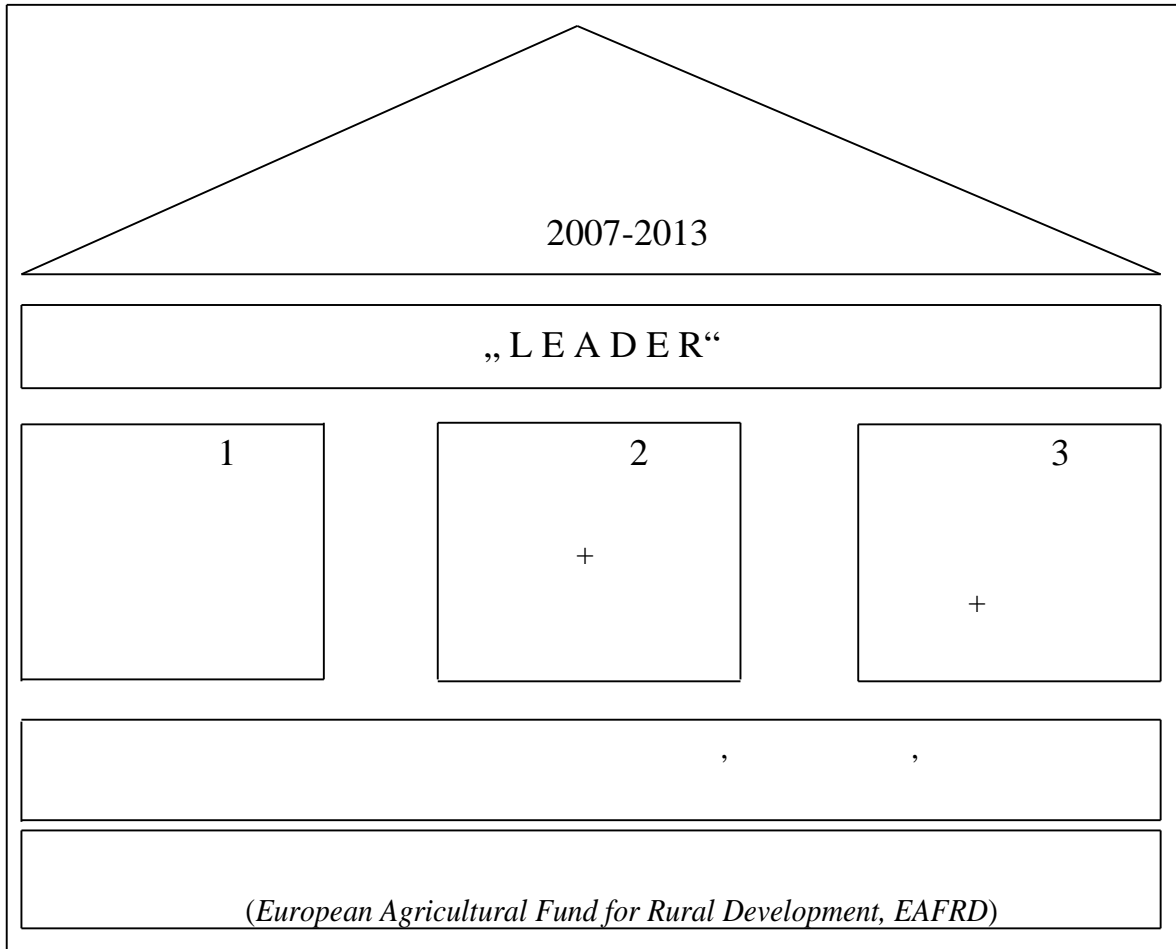
2).

⁸ *Agenda 2000 – For a stronger and wider Union* (1997) European Commission, p. 29

⁹ *Council Regulation* (EC) No 1698/2005, Title IV.

III-2.

, 2007.-2013.



: *Fact Sheet EU Rural development policy 2007-2013* (2006) Office for official publications of the European Communities, Luxembourg, p. 8.

(I
 10.
),
 a. ,
 ;
 ;
 ,
 ,

¹⁰ *Ibid*, Title IV, article 20.

II

(II),

11.

a.

„Natura 2000“;

;

„Natura 2000“,

(III)

¹¹ *Ibid*, article 36.

12.

LEADER (IV)
. LEADER

2. LEADER

LEADER
d'Economie Rurale,

Liasons Entre Actions pour le Development

“ . LEADER

1990.

” “,
LEADER

“

” “, . LEADER

. LEADER

13.

- ;
- ;
- ;
- ;

¹² *Ibid*, article 52.

¹³ , . (2007)

- ;
- ;
- .

LEADER

() .

,

.

10.000 100.000 ¹⁴.

LEADER

1991. ,

. LEADER

LEADER I

1991.–

1993. , LEADER II

1994.–1999.

LEADER+

2000.–2006. ,

-

(III-1).

LEADER I

LEADER I

,

LEADER I

217 - 442

III-1. LEADER

LEADER		-		
LEADER I	1991.–1993.	217	367.000 ²	442
LEADER II	1994.–1999.	906	1.375.144 ²	1.755
LEADER +	2000.–2006.	893	1.577.386 ²	2.105

: *The leader approach: a basic guide* (2006) European Commission, Office for Official Publications of the European Communities, Luxembourg, p. 6.

¹⁴ *The Leader Approach: a basic guide* (2006) European Commission, Office for Official Publications of the European Communities, Luxembourg, p. 8-9.

LEADER II

1994-1999

906 LAG- LEADER e.

LEADER II ,

LEADER II 100.000

LEADER II

(34%),

(29%),

(15%) (14%)¹⁵.

LEADER+ 893

70 ,

2000-2006.

(European Agricultural Guidance and Guarantee Fund - GGF)

Guidance ,

LEADER+ LEADER I II

2006. 51,7

, 1.570 ¹⁶.

LEADER

2007.-2013.

4

LEADER.

LEADER 2007-2013. se

(European Agricultural Fund for Rural Development- EAFRD).

5%

¹⁵ Herta, T.S., et al. (2003) *Ex-post Evaluation of the Community Initiative LEADER II*, Austrian Institute for Regional Studies and Spatial Planning, Vienna, p. 29.

¹⁶ LEADER (2012) „“; ECAS-European Citizen Action Services, Brussels, . 4.

„LEADER“.

10

LEADER

2,5%

„LEADER“

¹⁷.

1698/2005.

„LEADER“.

7

LEADER

18:

1.

;

2.

-

(

);

3.

„

“ (*bottom up*)

;

4.

;

5.

;

6.

7.

(*Local action group*-LAG)

LEADER-a.

¹⁷ Bureau, C., Gohin, A. (2009) *Farm support policies in the European Union: An appraisal of their non-distortionary effects*, Book chapter in *Non-distorting farm support to enhance global food production*, FAO, Rome, p. 149.

¹⁸ Council Regulation (EC) No 1698/2005, Section 4, Axis 4, Article 61.

19;

•

;

•

;

•

,

:

,

;

50%

;

;

;

;

,

;

•

,

;

•

.

,

,

"

" (*tto* -)

,

,

¹⁹ , ., (2007)

, .164-165.

”

“

”

“ (top-down).

”

“

20.

•

;

•

(

.);

•

○

;

○

;

○

○

EAFRD-a.

²¹ *Ibid*, . 40-41.

LEADER

Brugse Ommeland , ,
22 .
b tto - ,
Brugse
Ommeland, , LEADER +
EAFRD- ,
50% *Brugse Ommeland.*

Brugse Ommeland
Pak + Meetjesland.

²² Loughheed, J. (2009) *A selection of Leader + best practices*, European Observatory of rural areas, Luxembourg, p. 15-17.

3.

,
,
.

23.

, 2005. ,

24.

1. ,

, ;

2. ,

, ,

3. ,

, .

/

,

,

.

²³ *A Framework for Indicators for the Economic and Social Dimensions of Sustainable Agriculture and Rural Development* (2001) European Commission Agriculture Directorate-General, p. 8-9.

²⁴ Jorgensen, S.L., et al., (2005) *Empowering People by Transforming Institutions: Social Development in World Bank Operations*, The International Bank for Reconstruction and Development, Washington, p. 2.

²⁵ Bowler I.R., (2009) *Promoting sustainable agriculture and rural development*, Area studies - Europe, regional sustainable development review, EOLSS, Volume 1, p. 4.

(III-3).

III-3. „ “



32. : *The new rural paradigm: Policies and Governance* (2006) OECD Rural policy reviews, Paris, p.

2007-2013.

1698/2005.

3

III-2.

III-2.

a)	
)	

: *Council Regulation (EC) No 1698/2005, article 52.*

²⁶ Grieve J., Weinspach U. (2011) *Capturing impacts of Leader and of measures to improve Quality of Life in rural areas*, The European Evaluation Network for Rural Development, p. 4.

27.

a)

„Natura 2000“.

LEADER

4.

²⁷ Council Regulation (EC) No 1698/2005, article 57.

(*Rural Non Farm Economy - RNFE*)

(),

28.

29.

- ;
- ;
- ;
- ;
- ;
- ;

²⁸ Davis, J. R. (2004) *The Rural Non-Farm Economy, Livelihoods and their Diversification: Issues and Options*, Natural Resources Institute, UK, Chatham, Chapter I, p. 3.

²⁹ *Ibid*, p.7.

LEADER

– demand-pull (

).

– *distress-push* ().

, *distress-push*,

distress-push *demand-pull*

III - 3.

III - 3. *Push* *Pull*

<i>Push</i>	<i>Pull</i>
▪	▪
▪	
▪	▪
▪	
▪	▪
▪	
▪	▪
▪	
▪	▪
	▪

: Davis J., Pearce D. (2001) *The Non-Agricultural Rural Sector in Central and Eastern Europe*, Natural Resources Institute, UK, Chatham, p. 2.

demand-pull *distress push*

Buchenrieder *Mollers*

demand-pull *distress push*

1. *Demand-pull*

2. *Distress push*

(RNFE)

(RNFE)

III-1.

X- je

demand-pull *distress-push*

demand-pull *distress-push*

Distress

RNFE

distress-push

S1.

S1

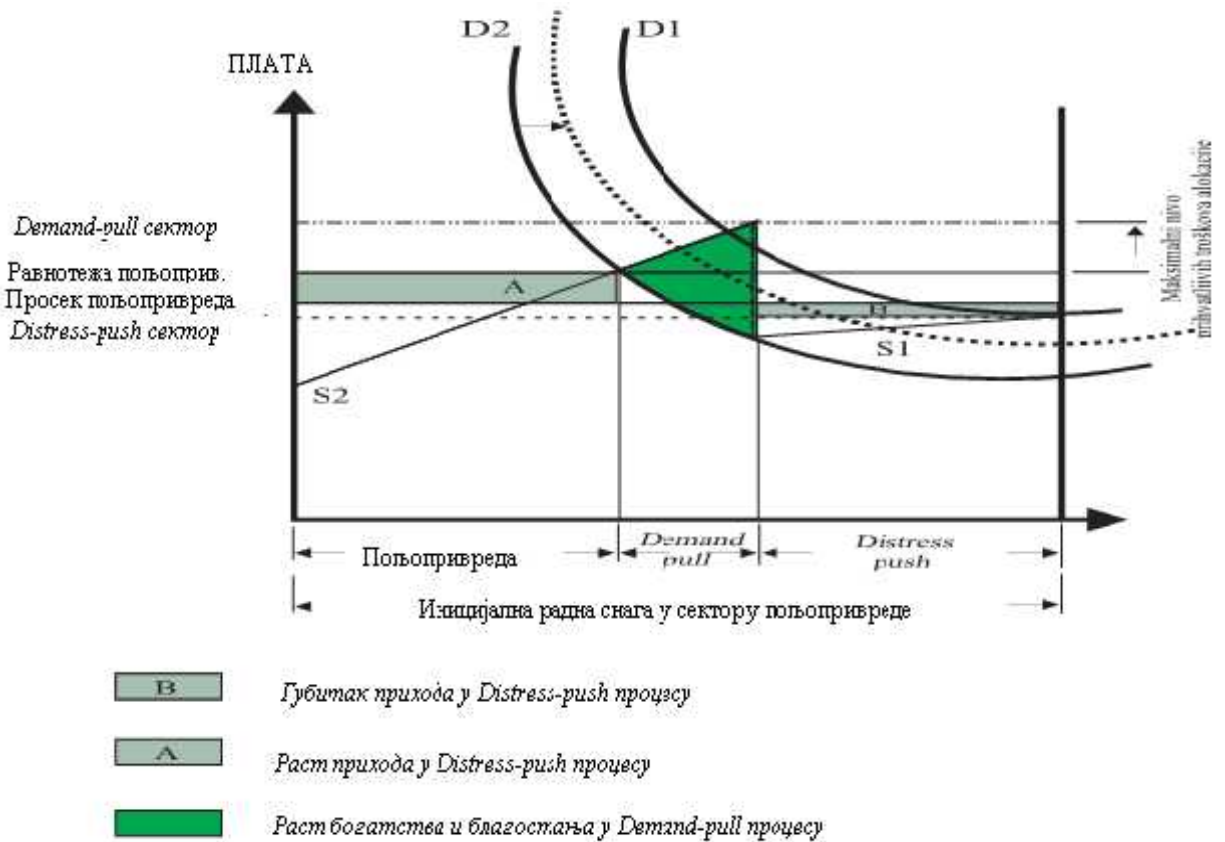
³⁰ Buchenrieder G., Mollers J. (2006) *A Synthesis of theoretical concepts for analyzing non-farm rural employment*, Paper presented at the International Association of Agricultural Economists Conference, Gold Coasts, Australia, p. 5.

distress-push

per capita

III-1.

Demand-pull Distress-push



: Buchenrieder. G., Mollers. J. (2006) *A Synthesis of theoretical concepts for analyzing non-farm rural employment*, Paper presented at the International Association of Agricultural Economists Conference, Gold Coast, Australia, p. 6.

demand-pull

(. ,)

.)

S2.

distress-push

S1.

S1

D1

()

distress-push ().

,

S2

demand-pull . S2

demand-pull

demand-pull

distress-push

S2

demand-pull

demand-

pull

III-1.

demand-pull

demand-pull distress-push

Icek Ajzena

31.

32.

➤ , ;
➤ - ;
➤ (, , .)
➤ , -
2003-2009. ,
-27 15
2009.
86%

33.

³¹ Ajzen, I. (1985) *From intentions to actions: A theory of planned behavior*, Book chapter in *Action Control: From cognition to behavior*, Springer Verlag, Heidelberg.

³² Bertolini, P., Montanari, M., Peragine, V. (2008) *Poverty and social exclusion in rural areas*, European commission, Directorate-General for Employment, social affairs and equal opportunities, Rome, p.27.

³³ *Rural development in the European Union - Statistical and economic information* (2011) European Union Directorate-General for Agriculture and Rural Development, p. 220.

2008.

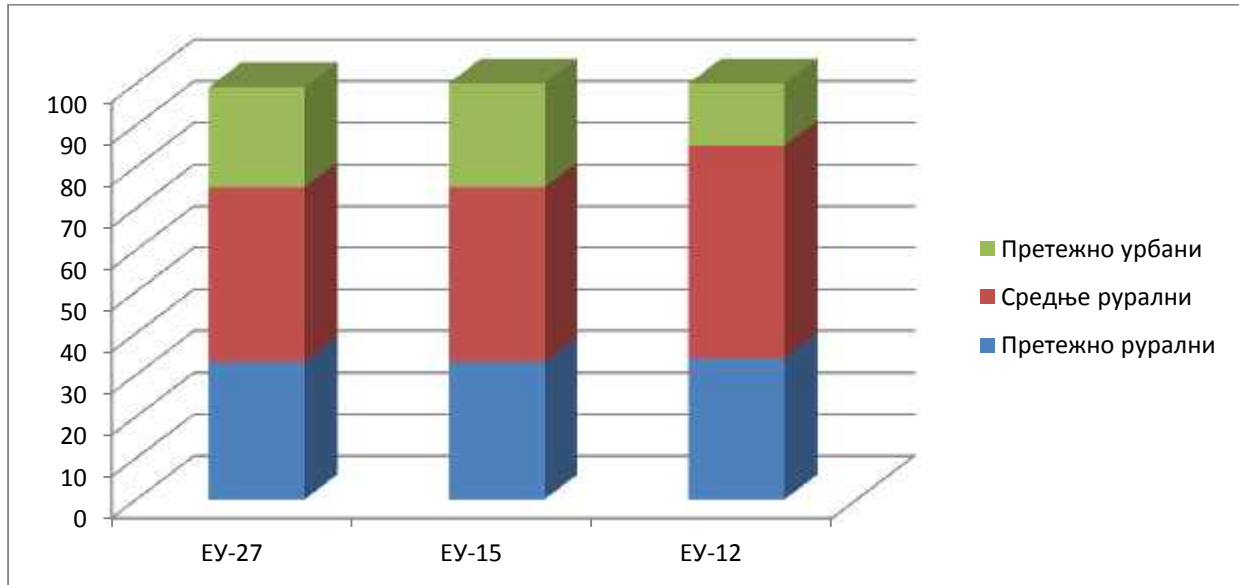
-27,

33%

(III-2).

III-2.

, 2008.



: *Rural development in the European union - Statistical and economic information* (2010) European Union Directorate-General for Agriculture and Rural Development, p. 27.

34.

2009-2013.

34 . (2002)

. 190.

95

35

5.

-27 59%

()

60%

36

³⁵ , 2009-2013. (2009)

³⁶ Bertolini, P., Montanari, M., Peragine, V. (2008) *Poverty and social exclusion in rural areas*, European commission, Directorate-Generala for Employment, social affairs and equil opportunities, Rome, p.14.

2006.
21,5%,

14,3%.
33%

16%.
2000.
2003.
29%

21%³⁷.

3 4

2007.-2013.

45%

0

3/4

0

³⁷ *Ibid*

II	45%	2002.	38.	80%
	60%			
60	, 15%			159
		147	39.	
				58%
				2002.
	14,2%,			
	10,6%.			
		7,8%.		
2,4\$	(III-4).	4.489	72\$,
	III - 4.		2002.	
(= 4.489)				
	7,8%	1,5%	0,5%	
	14,2%	3,2%	1,1%	
	10,6%	2,2%	0,8%	
:		(2003)		,
.7.				,

³⁸ *Serbia and Montenegro: Poverty reduction strategy paper for Serbia* (2004) International Monetary Fund, Staff country reports, Washington, p. 179.

³⁹ *Ibid*

14,4%, 22,7%, 13,2% (III - 5).

III - 5. (%)

	12,2%
	11,5%
	14,4%
	13,2%
	10,9%
	22,7%
	14,2%

: *Serbia and Montenegro: Poverty reduction strategy paper for Serbia* (2004) International Monetary Fund, Staff country reports, Washington, p.179.

2009. 21,32%.

(III-6).

III - 6.

%	23,36	32,98
%	30,08	30,69
%	24,82	18,60
%	18,94	14,84
%	2,80	2,89
	53,76	53,61
	41,81	42,18
	22,22	21,32
	24,22	23,44

: *2010-2013 (2009)*, .58.

,
15,
10 15 .
,
40.

1. ;
2. ;
3. ;
4. ,
5. .

2010-2013. ,

6.

2007.-2013.

Fund - EAGGF)

40

(*European Agricultural Guidance and Guarantee*

, 2007. ,

EAFRD)

(*European Agricultural Fund for Rural Development -*

(*European Agricultural Guarantee*

⁴¹ *Ibid*, . 52.

Fund - EAGF).

- EAFRD, 2007-2013. , 88,753 (III-7).

III- 7. EAFRD, 2007.-2013.

	2007	2008	2009	2010	2011	2012	2013		2013/2007
(2004)	11759	12235	12700	12825	12952	13077	13205	88753	112,2

: Proposal for a Council Regulation on support for rural development by the European Agricultural Fund for Rural Development, COM (2004) 490 final, European Commission, Brussels.

2004. ,

1,14% . 2005.

EAFRD – , 2007-2013. , 78,1

, 1,06% . 12,7

EAFRD, 90,8 .

57,7 . ,

,

(top-ups) , 2007-2013.

225,7 (III-8).

III-8. 2007.- 2013.

		%
- EAFRD	90,8	40,2 %
	57,7	25,6 %
	64,8	28,7 %
	12,4	5,5 %
	225,7	100

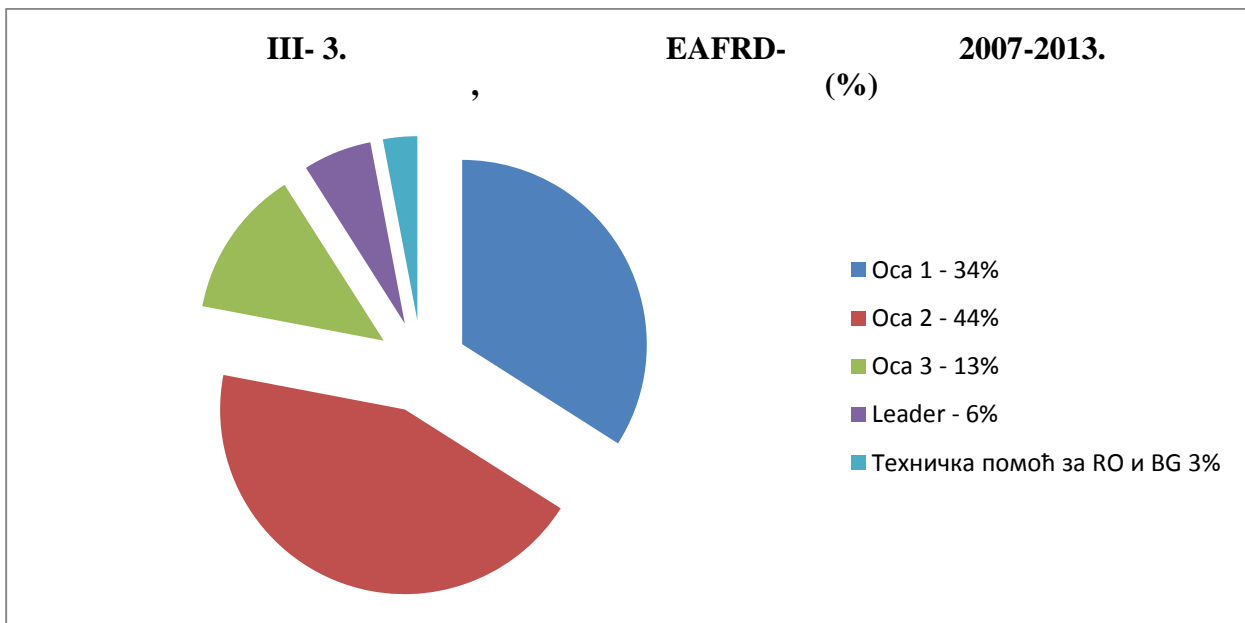
The EU Rural development policy: Facing the challenges (2008) European Commission, Directorate-General for Agriculture and rural development, p. 6.

1698/2005.

2007-2013.

42.

- 1: 10% EAFRD-a;
- 2: 25% EAFRD-a;
- 3: 10% EAFRD-a;
- 4: „LEADER“ 5%, 2,5% EAFRD-a;



The EU Rural development policy: Facing the challenges (2008) European Commission, Directorate-General for Agriculture and rural development, p. 6.

⁴² Council Regulation (EC) No 1698/2005, Article 17.

1989.
 PHARE, ISPA,
 - SAPARD (*Special Accession Programme for Agricultural and Rural Development*).
 2006.

2007-2013.
 CARDS
 (*Instrument for Pre – Accession Assistance – IPA*).

1085/2006

2007-2013.

III-4.

III- 4.



: , . (2009)
 , , . 62.

IPA I V

I e

II

V IPA –

IPA-RD 50%

75% 25%

50%

IPA-RD

2007-2013.

V

1,14

43.

2007-2013.

11,468 IPA

III-9. IPA, 2007.-2013.

	2007	2008	2009	2010	2011	2012	2013
	497,2	538,7	566,4	635,7	781,9	899,5	935,5
	141,2	146,0	151,2	153,5	156,5	159,6	162,9
	58,5	70,2	81,8	91,6	98,0	105,0	117,2
	2007	2008	2009	2010	2011	2012	2013
	189,7	190,9	194,8	197,9	201,8	205,8	214,7
	31,4	32,6	34,5	33,5	34,1	34,7	35,4
	62,1	74,8	89,1	105,3	107,4	109,4	111,8
	61,0	73,8	81,2	94,1	94,4	96,2	98,01
*	68,3	184,7	106,1	67,3	68,7	70,0	73,7

* 1244

: *Instrument for pre-accession assistance (IPA), revised multi-annual indicative financial framework for 2011-2013* (2010) European commission, Brussels, p. 6-10.

⁴³ *Instrument for pre-accession assistance (IPA), revised multi-annual indicative financial framework for 2011-2013* (2010) European commission, Brussels, p. 6-7.

(Multi-Annual Indicative Financial Framework-MIFF), 2007–2013. , I II
 1,39 ,
 IPA.
 II a a 79 (III-10.).

III-10. IPA 2007–2013.

IPA	2007	2008	2009	2010	2011	2012	2013	
	181,5	179,4	182,5	186,2	189,9	193,8	203,1	1316
	8,2	11,4	12,2	11,7	11,9	12,0	11,6	79

: Instrument for pre-accession assistance (IPA), revised multi-annual indicative financial framework for 2011-2013 (2010) European commission, p. 9.

2007.–2013.

(, ,)
 , , ,)
 IPA
 . IPA
 , .
 , 2009-2011. , IPA 1.490.000
 (III-11). ,
 ,

- „
- „
- „
- „
- „
- „
- „

(III-1).

12 3

III-1.



: 2007.-2013., IPA - (2007)

, , 10.

⁴⁵ Ibid, . 33

		11%		,	604.626
,			68%	,	270.161
,			-	,	-
,					
,	,	,	,	,	,
,	,	,	,	,	,
,	,	,			
			-		
,					
.				,	
					,

IV)

1.

60-
.
,
,
()
()
.
“ 2,3 2,6 ”
1950-1984.
250%⁴⁶.
60-
, 2000.
“ 60-
7% ,
40% 47.

⁴⁶ Pfeiffer, D.A. (2006) *Eating fossil fuels. Oil, food and the coming crisis in agriculture*, New society publishers, Canada, p.7.

⁴⁷ Pretty, J. N. (1995) *Regenerating agriculture: policies and practice for sustainability and self-reliance*, Earthscan publications, Great Britain, p. 3.

80-

10 30%⁴⁸.

49:

- , ;
- , , ;
- , (2,5)

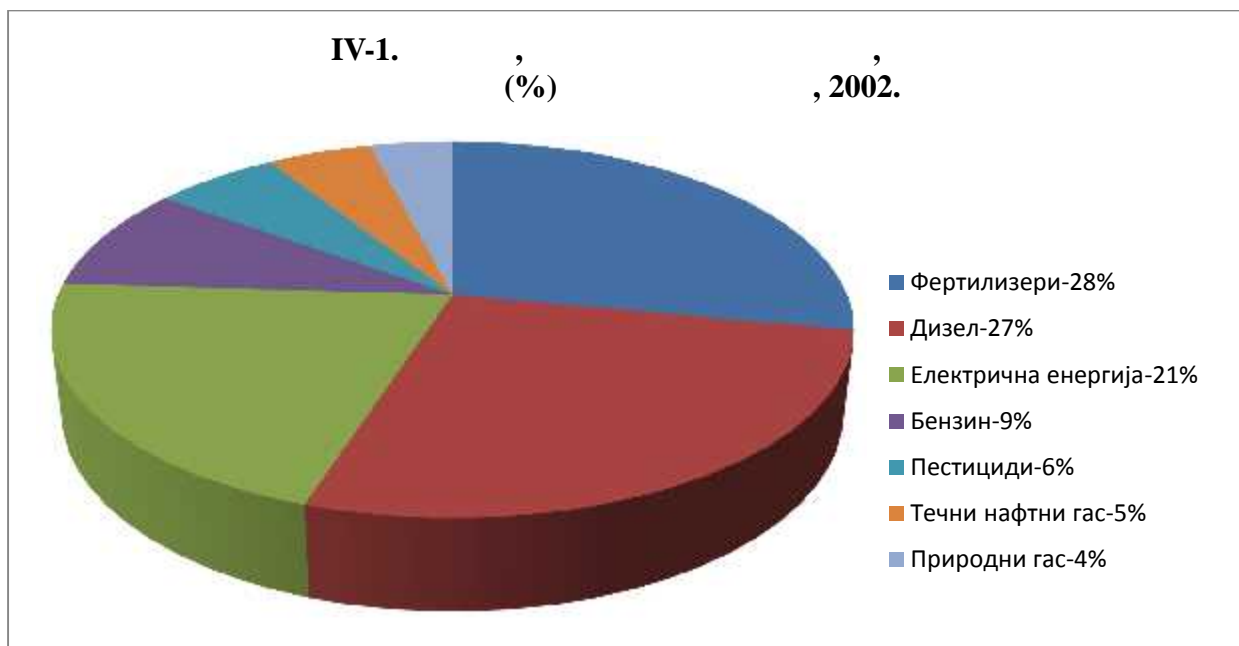
50.

⁴⁸ *Ibid*

⁴⁹ *Directions towards sustainable agriculture* (1999) Commission of the European communities, Brussels, p. 12.

⁵⁰ Montgomery, R. D. (2007) *Dirt: The erosion of Civilizations*, University California Press, Berkeley, p. 172.

10
10 e
1,3% 51
, ”
, ,
(IV-1.).



: Miranowski, A. J. (2004) *Energy consumption in U.S. Agriculture*, presentations in conference “Agriculture as a producer and consumer of energy”, USDA office of energy policy and new uses, p. 4.

⁵¹ Pimental D., Wilson A. (2004) *World Population, Agriculture and Malnutrition*, published in World Watch Magazine, Volume 17, No 5.

52 .

53 .

•

;

•

;

•

;

•

,

,

,

,

;

•

,

,

•

;

•

.

⁵² *Ibid*

⁵³ Pretty, J. N. (1995) *Regenerating agriculture: policies and practice for sustainability and self-reliance*, Earthscan publications, Great Britain, p. 4.

54.

55.

56.

•

;

•

;

•

;

•

;

•

;

•

,

•

, , ,

⁵⁴ *Ibid*

⁵⁵ Desai, B.K., Pujari, B.T. (2007) *Sustainable Agriculture: A Vision for Future*, New publishing agency, New Delhi, India.

⁵⁶ Pretty, J. N. (1995) *Regenerating agriculture: policies and practice for sustainability and self-reliance*, Earthscan publications, Great Britain, p. 95.

57:

-
-
-
-
-
-
-

,

,

,

,

(

)

XIX

58:

-
-
-
-
-
-

-

-

-

⁵⁷ , , , . (2008)

⁵⁸ *Ibid*

O

30% 50%
2008.
2,6

⁶⁰
, a e

59.

16

5,3

1,9

⁶¹.

37

, 2010.

10

⁵⁹ *Directions towards sustainable agriculture* (1999) Commission of the European communities, Brussels, p. 9.

⁶⁰ , . (2006)

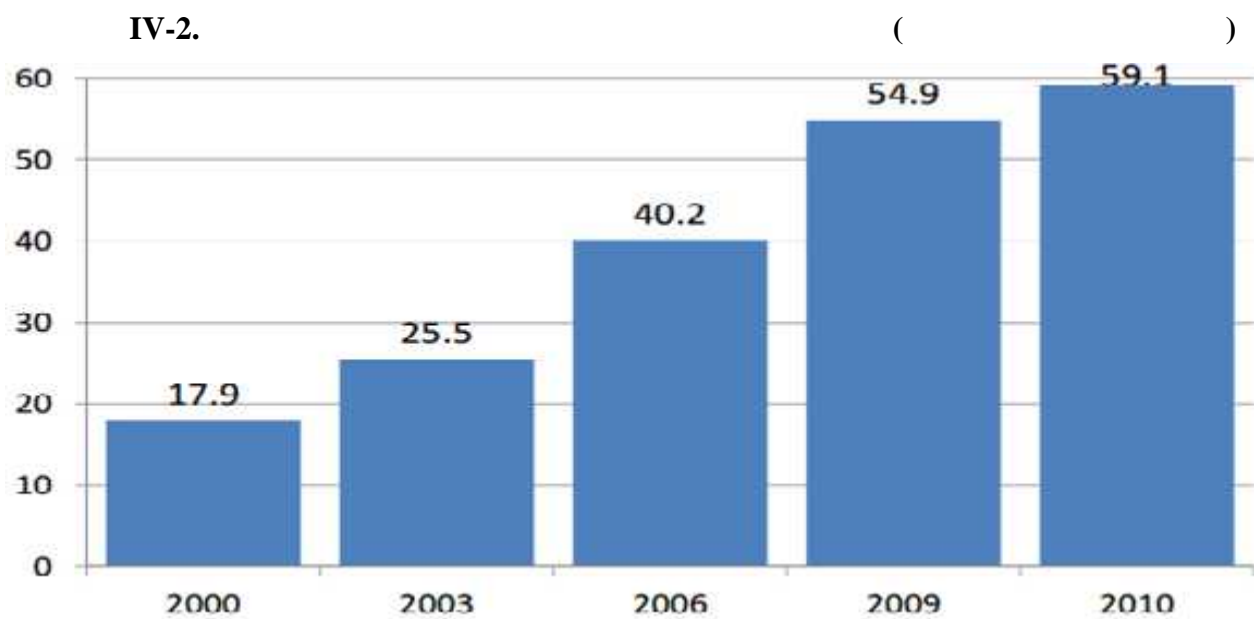
” “, . 13.

⁶¹ , . (2010)

, Agropress,

, 2, . 6.

, 2000.
(IV-2.).



: www.organic-world.net/fileadmin/documents/yearbook-2012/fibl-ifoam-survey-data-2010-global
2010.

2. SARD –

(Sustainable agriculture and rural development - SARD) 14 21,

SARD-

62

(Commission on Sustainable Development - CSD),

90-

CSD- ,

2000.

CSD-

CSD-8

()

21. .

(Food

and agriculture organization of the UN- FA UN)

SARD- . , FA

⁶² Agenda 21 (1992) United Nations Conference on Environment and Development (UNCED) held in Rio de Janeiro, Brazil, chapter 14.

SARD- ⁶³.

, 2002. , CSD-8,
SARD FA . SARD
FA .
SARD
,
14 21.
SARD
. SARD
,
(. ,
, ,)⁶⁴.
2008.
CSD-16
SARD
,
,
. SARD ⁶⁵:
• ,
•
• SARD- .
,
SARD ,

⁶³ *Report on the eighth session CSD* (2000) Commission on Sustainable Development, Economic and Social Council, New York, p. 21.

⁶⁴ www.fao.org/economic/esw/programmes/the_sard_initiative/en

⁶⁵ *The Practice to Policy Continuum in Sustainable Agriculture and Rural Development (SARD): a Civil Society Reflection on the Importance of Collaborations of Major Groups and Governments to Advance SARD* (2008) Commission on Sustainable Development, Sixteenth Session, New York, p. 10.

SARD- .

(.)⁶⁶.

SARD

SARD

FAO 2007. SARD

SARD-

FAO 270

135

67.

FAO , 2008. UNEP-

SARD-M

⁶⁶ *Guide How to produce a succinct description of a SARD Good Practice* (2006) FAO and SEI, Rome, p. 2.

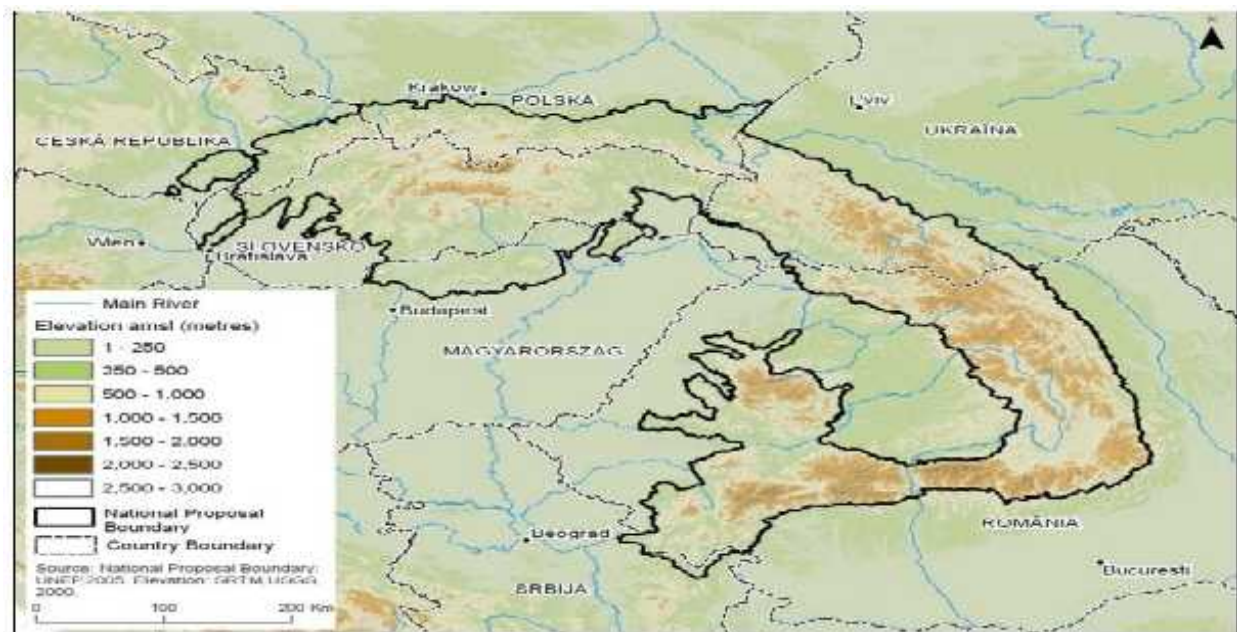
⁶⁷ *Sustainable Agriculture and Rural Development in Mountain Regions (SARD-M)* (2008) FAO, OECD DAC, UNDESA, p. 1.

SARD-M

je 161.805 ², 17.410.000 (IV-1.).

IV-1:

SARD-M



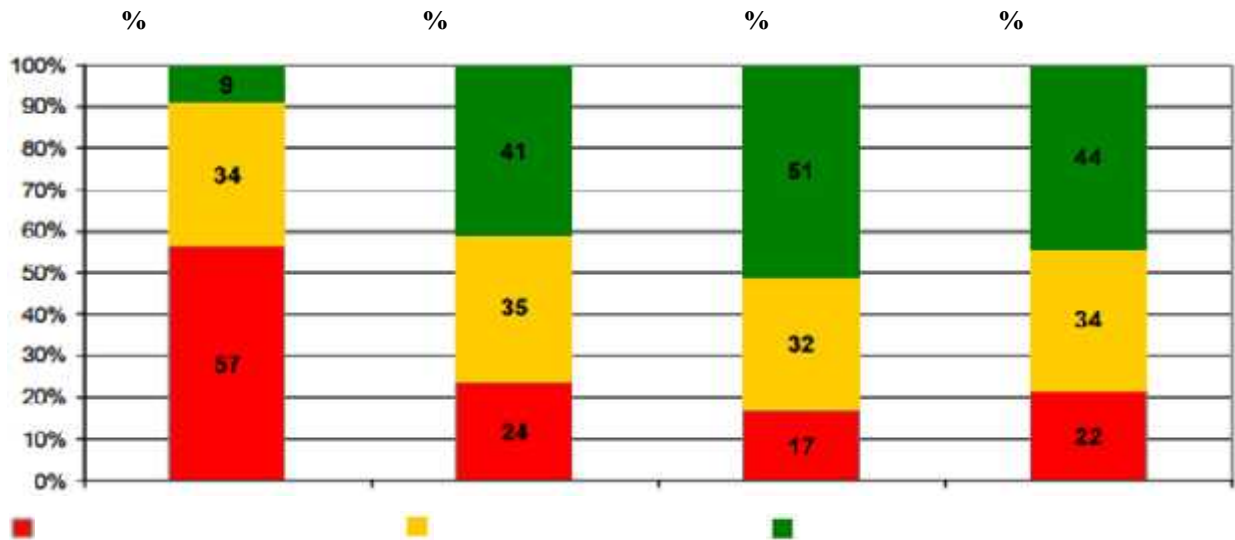
: *SARD-M for the Carpathian Convention Member States* (2008) European Academy of Bolzano/Bozen, Italy, FAO and UNEP, p. 15.

SARD-M,

⁶⁸ *SARD-M Report for the Carpathian Convention Member States* (2008) European Academy of Bolzano/Bozen, Italy, FAO and UNEP.

3.

2008. () 49%
 56%
 -27 17%
 22% (IV-3.).
IV-3. - -27, 2008.



: *Rural development in the European Union - Statistical and economic information, Report (2011)*
 European Commission, p. 41.

⁶⁹ *Ibid*, p. 44-47.

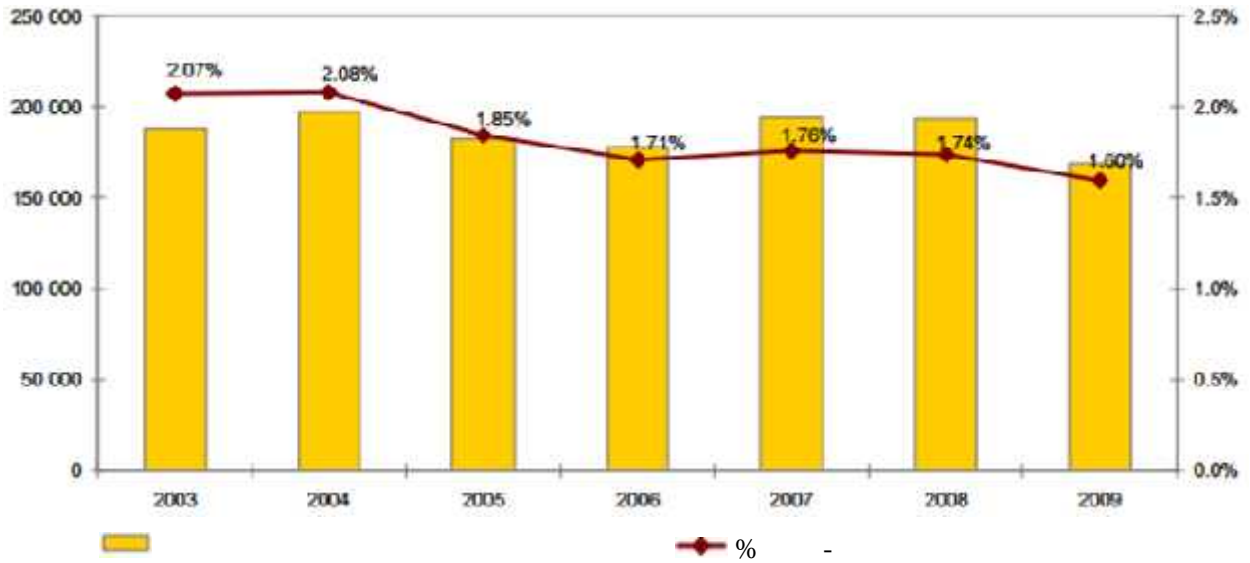
45% -27
27 , 2007. , 10
70.
(, ,) -27 2009.
, 168 - , 1,60% - .
, -27 12,2 5,5%
, 1 % , 13% , 20%
28% 71.
, -27
720 , 15%
-27
-27, 4,6
, 46% 72.
, 2009. -27 168 .
, -27
, - 2,07% 2003.
1,60% 2009. (IV-4.).

⁷⁰ Bontron, J. C., et al., (2007) *Rural Europe: Definitions, Issues and Policies*, Foundation for future generations, p. 25.

⁷¹ *Situation and prospects for EU agriculture and rural areas* (2010) European Commission, Directorate-general for agriculture and rural development, p. 13.

⁷² Bontron, J. C., et al., (2007) *Rural Europe: Definitions, Issues and Policies*, Foundation for future generations, p. 25.

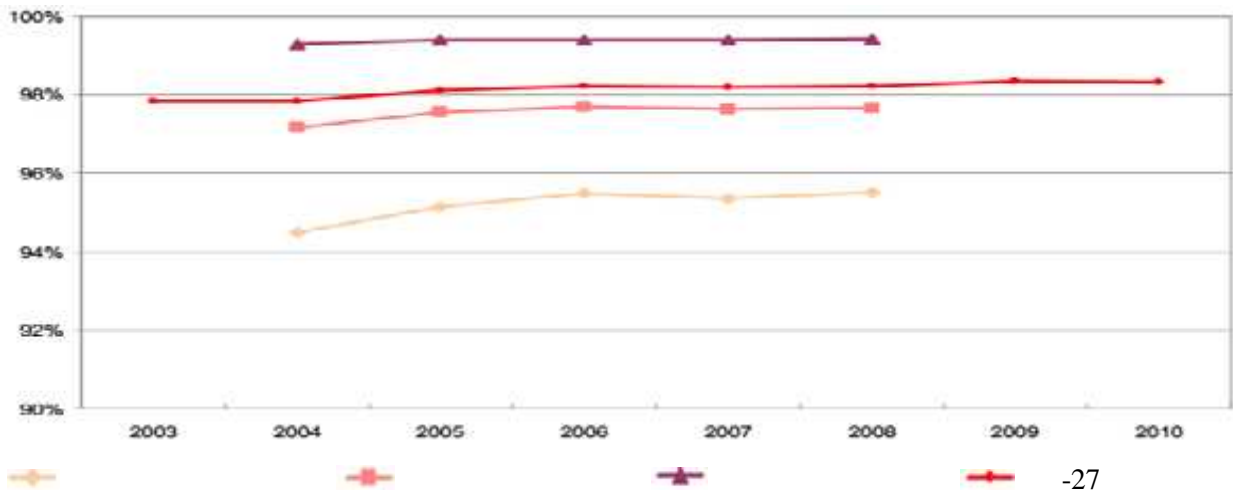
**IV-4.
2003-2010.**



: *Rural development in the European Union - Statistical and economic information, Report (2011), European Commission, p. 90.*

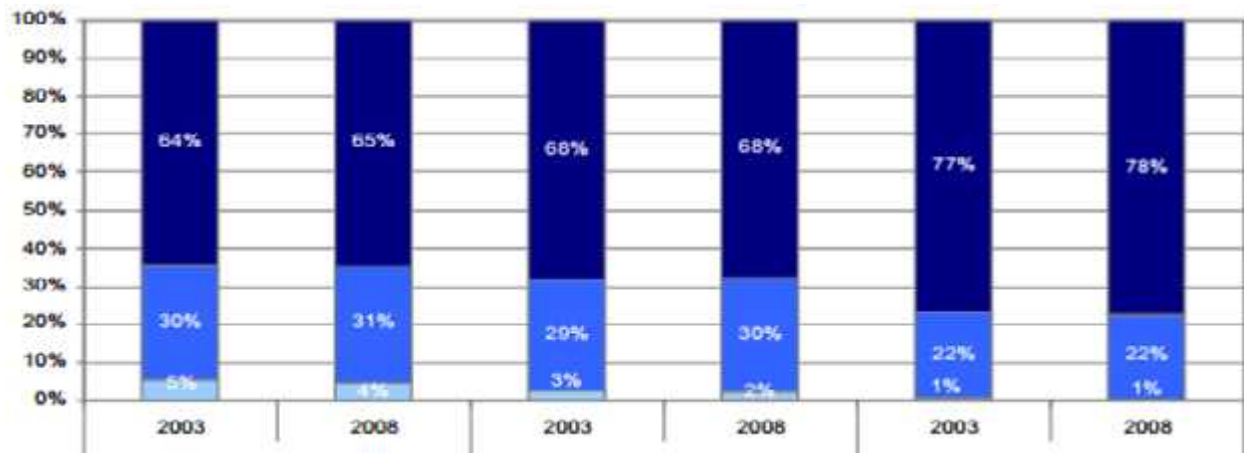
-27, 2008. 96% - .
2004. 2008. , -
-27 2% (IV-5).

**IV-5. -
(2003-2009)**



: *Rural development in the European Union - Statistical and economic information, Report (2011) European Commission, Directorate-General for Agriculture and Rural Development, p. 225.*

-27 31% 2008. , 22%. 2008.
 30% -27, 65% -
 , 68% 78%
 (IV-6).
IV-6.- (,) -27



: *Rural development in the European Union - Statistical and economic information, Report (2011)*
 European Commission, Directorate-General for Agriculture and Rural Development, p. 59.

50% - ,
 72% 71% - ,
 -27 73%, 72% 69%⁷³.

⁷³ *Rural development in the European Union - Statistical and economic information, Report (2011)* European Commission, Directorate-General for Agriculture and Rural Development, p. 60.

2008.

-27

74

75.

•

•

•

•

•

7%

4,5%

11,5%

76

(IV-1).

⁷⁴ *Rural development in the European union - Statistical and economic information* (2010) European Union Directorate-General for Agriculture and Rural Development, p. 27.

⁷⁵ (2009)

.103.

⁷⁶ *Country Report Serbia* (2006) ACROTRASS consortium, Study on the State of Agriculture in Five Applicant Countries, p. 6.

2011.

23%

IV- 1.

2011.

	710,6
	627,7
	533,9
	526,8
	471,9
	354,9
	346,2
	286,6
	228,5

(Directive 2001/77/EC),

2008.
 2013.
 1,6
 2
 80%
 77.
 2,3
 300.000
 170.000.
 1,2
 260.000⁷⁸.

⁷⁷ Farrell, J. (2009) *Rural power: The Key to Sustainability*, Eastern Oregon Forestry Newsletter, Oregon State University, p. 2.

⁷⁸ Renner, M., Sweeney, S., Kubit, J. (2008) *Green Jobs: Towards Decent Work in a Sustainable, Low-Carbon World*, United Nations Environment Programme, p. 6.

V)

1.

79:

- () -
/
- - ; (
- - - ;
- - ;

, , , , .
2001.

- , 80.
 - ,
 - ,
 - ,
 - , ,
 - , ,
 - , , , .
- , 70- , .

- , 81.
- a
- ;
- ;
- ,
- ;
- ;
- ,
- ;
- ;

⁸⁰ *Ibid*, . 75.
⁸¹ , „ , . (2009)
33.

■

;

■

1993.

50.000

⁸².

XX

(52%),

(10,9%),

(9,4%),

(8,2%),

(5,4%)

2009.

200.000

2.000.000

12

26

⁸³.

27%

35.000

⁸⁴.

⁸² Carter, E.S., Stansfield, J.M. (1994) *British Farming, Changing Policies and Production Systems*, Farming Press Ltd., Ipswich.

⁸³ , , . (2009) , , , .

55-56.

⁸⁴ *Ibid*, 56.

3.000

170

85

SWOT

V-1.

86

⁸⁵ *Ibid*, 59

⁸⁶ , . (2004)
172-173.

V-1. SWOT

<ul style="list-style-type: none"> • • • • • • • 	<ul style="list-style-type: none"> • • • • • • •
<ul style="list-style-type: none"> • • • • • • • 	<ul style="list-style-type: none"> • • • • •

: „ „ „ (2008) , .135. ,

87.

* — , , ;
 * — , , ;
 * — , ;
 * — , ;
 * — , , ;
 * — , ;
 * — , , .

e

87 , , , . (2008) , .121.

88.

()

35.000

21

2006.

18

44

89.

2009.

43

143

2010.

10,4

16%

90.

⁸⁸ . (2009)

⁸⁹ www.selo.co.rs/page.php?id=37

⁹⁰

(2011) UN Joint Programme

“Sustainable Tourism for Rural Development“,

. 50.

2.

j

(V-2).

V-2.



: Hall, M., et al. (2003) *Food tourism around the world: Development, Management and Markets*, Butterworth-Heinemann, Oxford.

91 , , , . (2008)

Reggio Emilia
Bregenzerwald,

Bergkase

95

Bregenzerwald

580²

30.000

40%

4.260

Bergkase

96

Bregenzerwaldu

15.000

1,5

60%,

40%

1991.

Bregenzerwaldu

⁹⁵ , , , , . (2008) , , .77.

⁹⁶ *Towards Quality Rural Tourism* (1998) European Commission DGXXIII, Tourism Directorate, Brussels, p. 83.

„ *Bregenzerwald*“, 97:

•

,

;

•

;

•

,

,

;

•

,

,

, 1995.

„ *Bregenzerwald* „

“

Bregenzerwald,

,

,

„ *Bregenzerwaldu*“,

Bregenzerwaldu 150

,

,

,

Bergkase

.

, 1997.

Bergkase

⁹⁷ *Ibid*, p. 84.

12

(V-1).

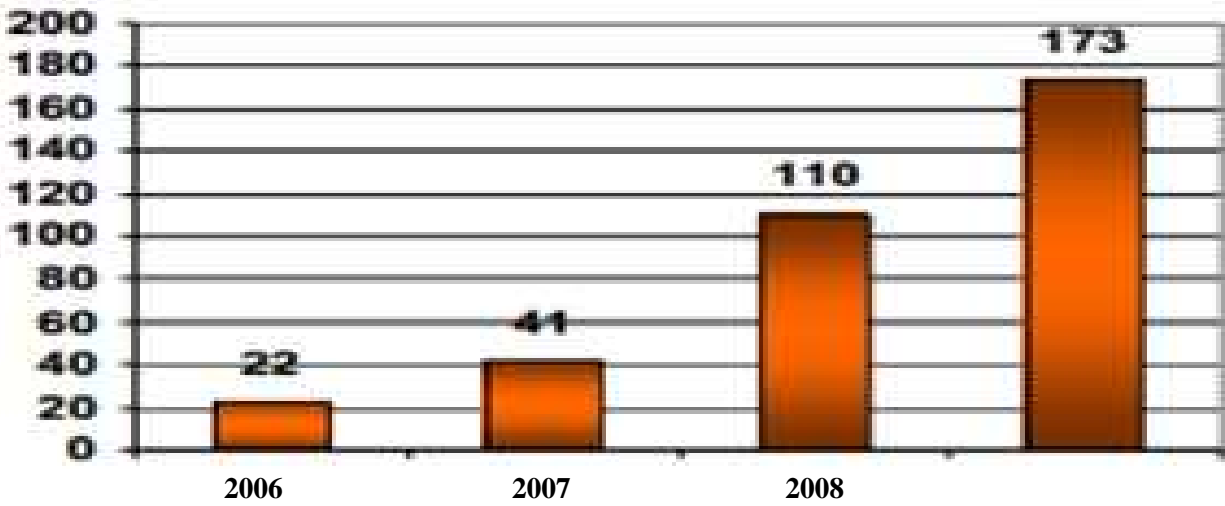
V-1.

12	4

:
Joint Programme “Sustainable Tourism for Rural Development“,
88.

(2011) UN
, . 87-

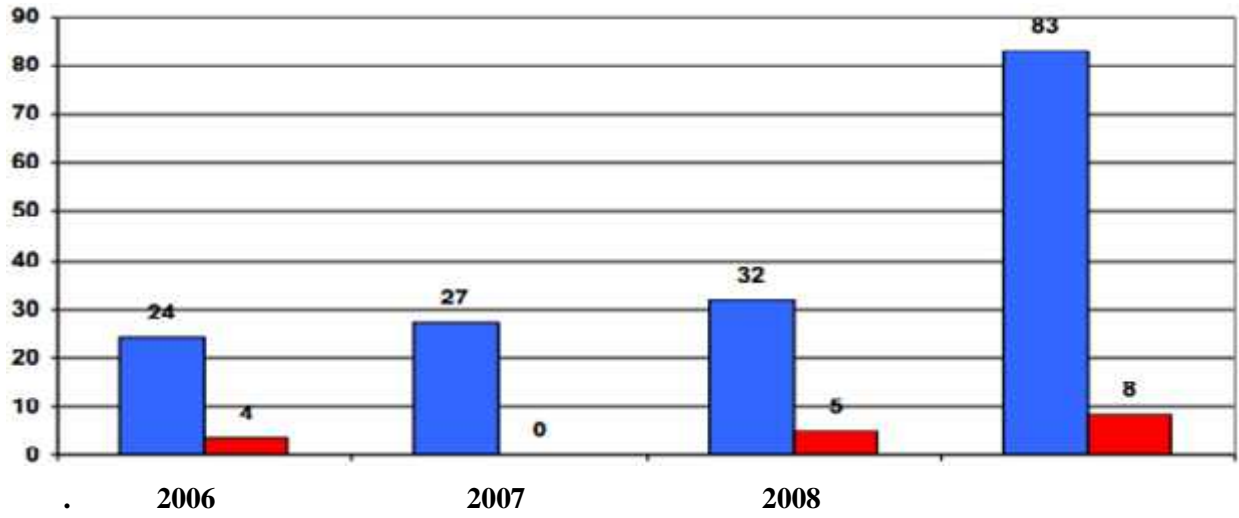
90.580.215
 2008. 110, 5
 2006. (V-1).
 V-1 –



:
 (2009)
 .3.
 30% 60%

83

8
 (V-2).
 (MDG-F),
 2010. 2012. , 4
 “
 (UNDP, UNEP, FAO, UNICEF UNWTO)



■ (, ...)
■ :

(2009) , , 11. , UNWTO

() .
 2011. ,

600.000

UNWTO

I)

II)

III)

¹⁰⁰ <http://cooperation.unwto.org/supports-rural>

;

;

,

;

,

,

.

1.000

.

,

.

30

,

3

4

grace

1%¹⁰¹.

.

,

,

,

,

,

,

.

102.

•

,

•

,

•

•

-

.

¹⁰¹ , . (2002)

¹⁰² 6,

, .76.

, .23.
(2005) *Horwath Consulting*

4.

(EUROPARC Federation),

103

104

105

-
-
-
-
-

1970.

166

435

1950.

1990.

2012.

1950.

25

¹⁰³ *European Charter for Sustainable Tourism in Protected Areas* (2010) EUROPARC Federation, Regensburg, Germany, p. 4.

¹⁰⁴ Carbone, G., Yunis, E. (2005) *Making Tourism More Sustainable: A Guide for Policy Makers* (2005) World Tourism Organization & United Nations Environment Programme, Madrid, Spain, p. 12.

¹⁰⁵ www.worldtourism.org/sustainable/concepts.htm

106 .

2020. ,

UNWTO

1,5 .

,

,

.

,

.

.

.

,

,

,

-

107 .

.

, 2005.

5%¹⁰⁸ .

(*carrying capacity*) .

" "

.

,

¹⁰⁶ <http://1billiontourists.unwto.org>

¹⁰⁷ Buhalis, D., Costa, C. (2006), *Tourism business frontiers: Consumers, Products, Industry*, Butterworth Heinemann, Oxford.

¹⁰⁸ Honey, M., Krantz, D. (2007) *Global Trends in Coastal Tourism*, Stanford University, p. 30.

SWOT

109

110

111

I)

II)

III)

¹⁰⁹ , . (2008)

¹¹⁰ , .. , .., Kusen, E., (1997) *Guidelines for Carrying Capacity Assessment for Tourism in the Mediterranean Coastal Areas*, United Nations Environment Programme - UNEP, Split, p. 5.

¹¹¹ *National and Regional Tourism Planning* (1994) World Tourism Organisation - WTO, Madrid.

112.

1.

2.

3.

4.

5.

(V-3).

¹¹² *Background Information on Environment and Tourism in the Context of Sustainable Development* (1994) European Commission, DG XI Environment, Brussels.

V-3.



: Muller, H. R., (1993) *Challenges in our time and their consequences for tourism management*, Research institute for leisure time and tourism, Berne.

150

113

5

¹¹³ *Ibid*

5.

114.

115.

116.

¹¹⁴

2.

¹¹⁵ *Ibid*, 29.

¹¹⁶

, 49.

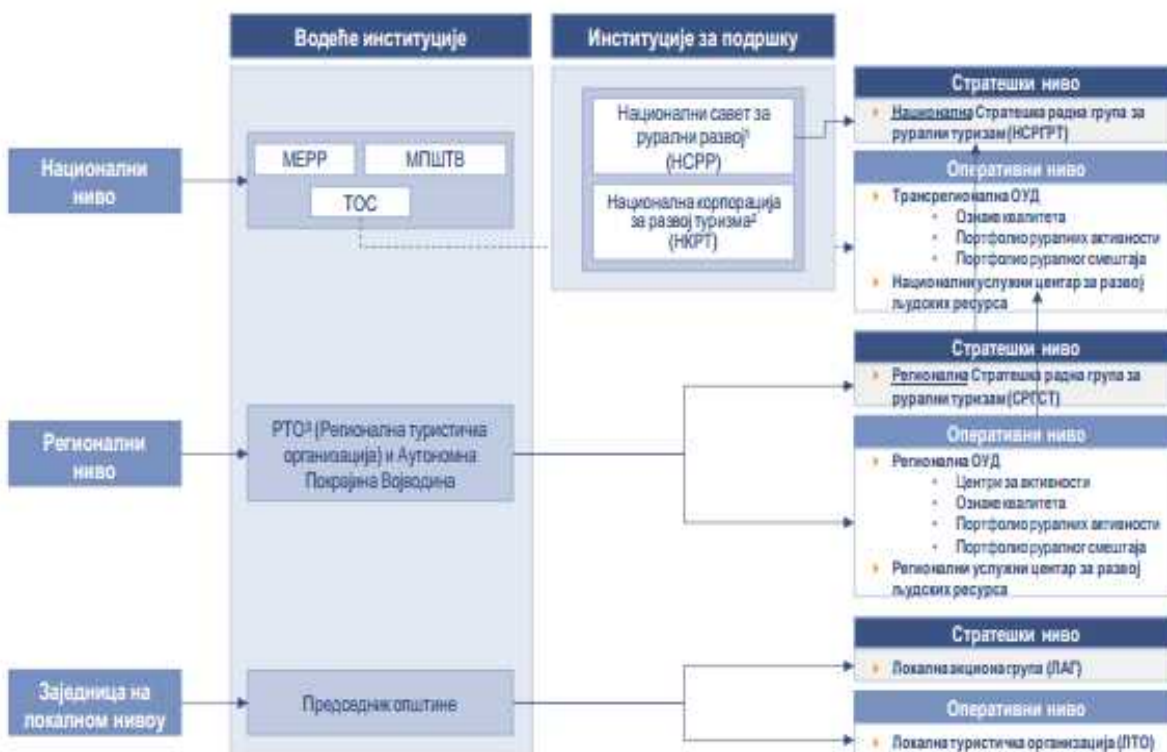
(2009) „

“, 36/2009, „

(2005) Horwath Consulting

(V-4.).

V-4.



1
2
3

(2011) UN Joint Programme “Sustainable Tourism for Rural Development“, funded by the Spanish MDG Achievement Fund, . 125

()

117.

IPA

118.

2012.

¹¹⁷

(2009) „

“, 36/2009,

32.

¹¹⁸

(2011) UN Joint Programme “Sustainable Tourism for Rural Development“, funded by the Spanish MDG Achievement Fund, . 190.

(),

().

12

119.

- ;
- ;
-
-

()

¹¹⁹ *Ibid*

III

” “

VI)

” “

1.

” “

40 , 32
 - , „S“, 32
 (VI-1).
 420 , (1833 . . .),
 (1785 . . .), (1748
 . . .) (1725 . . .).

VI-1. –



: www.golija.biz

2000.-2005.

•
 •
 •
 •
 •

2000-2005

13,3 °C,

1,6 °C.

°C 2,6, 11,8 .

25 °C 3,4

14,7 .

30 °C 0,4 (VI-1.).

VI-1.

2000. – 2005.

ПАРАМЕТРИ КЛИМЕ	Месеци												ГОД.
	јан.	феб.	март	април	мај	јун	јул	авг.	сеп.	окт.	нов.	дец.	
Температуре ваздуха (Т, °С)													
Средња максимална	0,6	2,8	8,4	12,5	18,7	21,8	23,8	24,3	18,0	15,6	9,4	2,7	13,3
Средња минимална	-8,5	-7,9	-3,0	1,5	5,5	8,1	10,2	9,8	6,4	3,0	-1,1	-6,0	1,6
Амплитуде	9,1	10,7	11,4	11,0	13,3	13,8	13,7	14,5	11,6	12,6	10,5	8,6	11,7
Број дана са Т _{мин.} < -10	-4,3	-3,2	2,2	6,8	12,2	15,0	17,0	16,7	11,5	8,5	3,4	-2,1	7,0
Број дана са Т _{макс.} < 0	11,8	8,5	3,5	0,2	0,0	0,0	0,0	0,0	0,0	0,3	0,2	7,0	2,6
Број дана са Т _{мин.} < 0	27,5	25,0	21,8	9,0	1,5	0,3	0,0	0,0	2,3	6,8	17,8	25,0	11,4
Број дана са Т _{мин.} > 20	0,0	0,0	0,0	0,0	0,0	0,0	0,0	0,2	0,0	0,0	0,0	0,0	0,2
Број дана са Т _{макс.} > 25	0,0	0,0	0,0	0,2	2,2	8,5	14,2	14,7	0,7	0,2	0,2	0,0	3,4
Број дана са Т _{макс.} > 30	0,0	0,0	0,0	0,0	0,0	0,5	2,3	2,5	0,0	0,0	0,0	0,0	0,4
Ваздушни притисак (мб)													
Просек	897,2	897,3	897,6	895,0	898,6	900,6	899,1	900,3	900,1	900,8	898,7	897,7	898,6
Релативна влажност ваздуха (РХ, %)													
Просек	82,3	78,8	73,5	73,0	71,8	71,2	71,0	71,7	78,5	78,5	78,8	83,5	76,2
Инсолација (н, час)													
Сума	80,7	108,6	160,9	154,9	215,0	243,0	252,5	255,4	147,4	138,1	98,3	68,5	1923,1
Сума падавина (П, мм)													
Сума	67,1	54,4	39,0	69,0	67,9	60,4	78,5	71,5	99,4	68,8	81,8	68,7	826,5

: , , , (2010)

, 22.

, 900,8 . 898,6 895
 76,2 % 83,5 %.
 , 71%.
 , 2000.-2005. ,
 1923,1.
 1714 1700 ¹.
 255,4
 , 252,5 . ,
 , .
 ,
 .
 (,), 2000.-2005. ,
 826,5 .
 ,
 30 , 1300 . . . , 70 ,
 50 20 ².
 .
 200 250 .
 , 47,9 ,
 ,
 ,
 ,
 ,
 ,
 ,
 ,
 ,
 2.100 / ².

¹ ,

, (2000) , , .24.

² (2009) ,,

“, .16/2009, .28.

470 , 12 - 17 / / ²,
3 3.

，
，
，
，
20 ，
“ ” “ ” “ ” “ ”
“ ” “ ” “ ” “ ”
：
➤ 60 ， 01.04.2010. 30.06.2010.
➤ ， 2000. 2009.
： 10 ， 40 ， 50
60 . VI-2.
60 ，
5,10 / .
60 ， 21,1
/ . 60 6 / 47 % ，

3

，(1997)

“ ” .

VI-2.

30.06.2010.

01.04.2010.

2010.	(%)	(/)			
		60	50	40	10
	96,78	4,51	4,48	4,36	3,77
	100	5,87	5,80	5,61	4,81
	100	4,87	4,86	4,71	4,13
	98,93	5,10	5,06	4,91	4,25

: , . (2010)
, . 25.

, . . . "H.W.E.",

25 .

1244 .

19,5

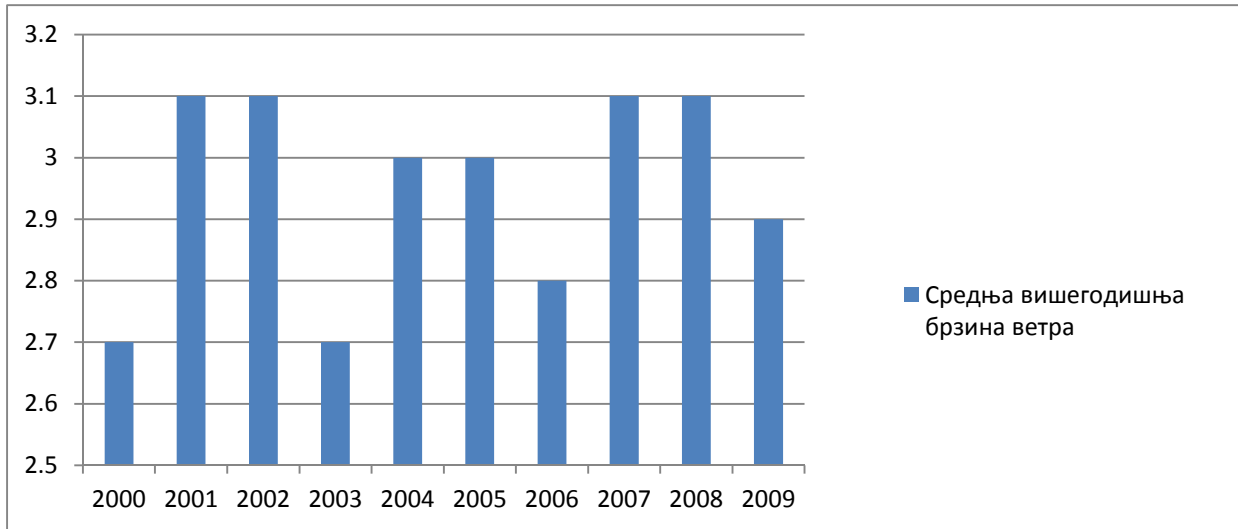
10

VI-1.

2000. –

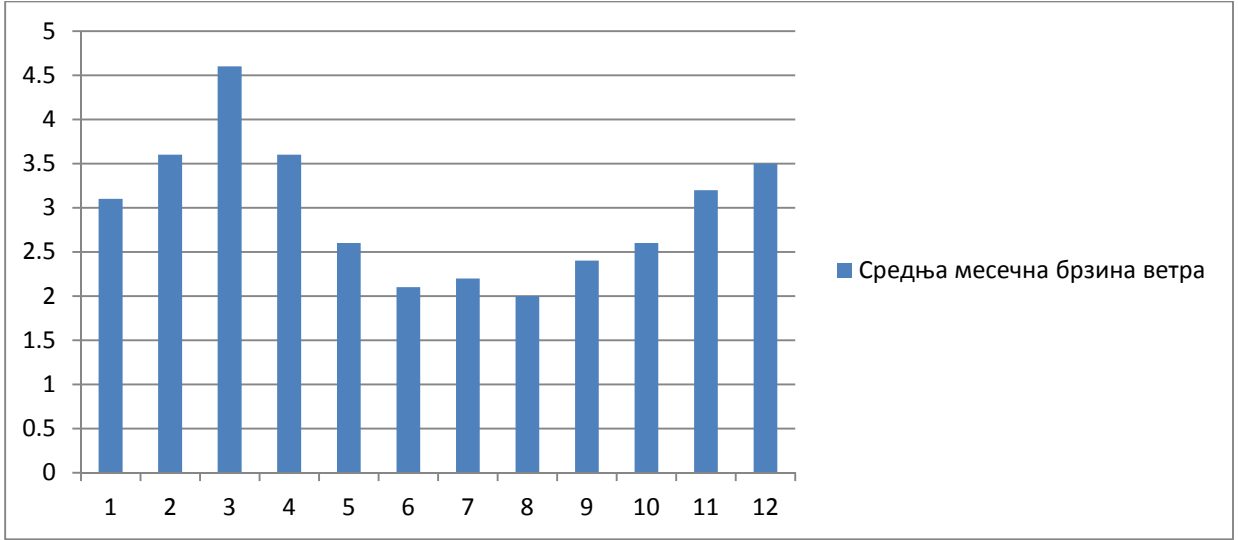
2009.

VI-1.-



:
 , 2000.-2009. ,
 2,97 / . 2000. 2003.
 .
 – .
 , 2000. – 2009. 4,6
 / , је 2 / (VI-2.).

VI-2.-



:

7,5 / . ,

110 ,

950

4.

heldreichii),

(*Acer*

225

VI-3

+,

⁴ , . (1989)

“ ” , . 531.

(, , , , ,) .

VI-3.

- + *Gentiana lutea* L.
- Agrimonia eupatoria* L.
- Asarum europaeum* L.
- Capsella bursa pastoris* L. -
- + *Fraxinus excelsior* L.
- + *Malva silvestris* L.
- + *Melissa officinalis* L.
- Plantago lanceolata* L.
- + *Vaccinium myrtillus* L.
- + *Achillea millefolium* L.
- Artemisia vulgaris* L.
- + *Atropa belladonna* L.
- + *Centaurium umbellatum*
- + *Juniperus communis* L.
- + *Matricaria chamomilla* L.
- + *Papaver rhoeas* L.
- + *Quercus petraea*
- + *Verbacum phlomoides* L.

: , . (1989)
. 461-464.

22

45

90

"5.

420

750

950

⁵

(2000) , , 71.

, ()
 55,5 ,
 54,1 43 , 1200 ^{3/} ,
 , 6.
 ,
 , 20. 2001. ,
 ” “ ” “ I
 7.
 ” “
 , ,
 -
 . ” “, 751,26 ² 75.126 ,
 5 431,63 ², 126,23 ², 115,50 ²,
 49,26 ² 28,64 ². (VI-4.).

VI-4. - ” “

												2
	%	%	%	%	%	%	%	%	%	%		
431,63	57,45	126,23	16,81	115,50	15,37	49,26	6,56	28,64	3,81	751,26		
431,63	78,89	-	-	115,50	21,11	-	-	-	-	547,13		

: “ .16/2009”, , .8.
 ” “,
 ” “, 547,13 ²,
 , UNESCO ” “

⁶ , . (2006) , ,
 , .158.
⁷ (2001) ,, “, 45/2001,
 , 1.

(„Man and Biosphere - MaB“), 2001.

„ - „.
„ „ 18 ,
553,8 , I . II
20 3.883,10 , 70.746,10
94,2% III 8.

I
: „ “ (60,80) , „ “
(0,20) , „ “ (34,00) , „ “ (63,60) , „ “ (15,20
) , „ “ (1) , „ “ (38,00) , „ “ (20,50) , „
“ (26,80) , „ “ (65,80) , „ “ (44,00) , „ “ (66,10) ,
„ “ (24,80) , „ “ (32,40) , „ “ (27,60) , „
“ (28,80) , „ “ (4,00) „ “ (0,20) .
II : „ “ (390,20) , „
“ (133,95) , „ “ (12,00) , „ “ (851,00) , „
“ (390,20) , „ “ (84,40) , „ “ (55,80) , „ “ (125,20) ,
„ “ (132,35) , „ “ (226,70) , „ “ (362,10) ,
II (82,40) , „ “ (194,60) , „ II“ (86,80) , „
“ (134,80) , „ “ (52,80) , „ “ (282,00) , „ “ (231,20
) , „ “ (25,60) „ “ (29,00) .

„ „ 94,2% ,

III ,

III

“ ” :

⁸ *Ibid*, 4.

III

10

, 2007.

9 „ „

10 ja (2000) „ „ 155.

„ 5, 2. (2001) „ „ 45/2001,

11.

2.

„ “

„ “, 2011. , 6.598

, je 46,9 %,

8,8

/ ².

22,4

/ ²,

14,3

/ ²

7,2

/ ² (VI-5.).

VI-5.

„ “ 2011.

	(²)		%	(/ ²)
	431,63	3.100	46,9	7,2
	28,64	154	2,1	5,4
	49,26	1.103	16,7	22,4
	126,23	685	10,3	5,4
	115,50	1.656	25	14,3
	751,26	6.598	100	8,8

: , www.citypopulation.de/serbia

1961.

„ “ ,

¹¹ , . (2014) , - , .114.

1991.

:

-
-
-
-
-
-

8 11.339 , 20 58,2% , 6.598

8 38 , 30

8 (VI-6).

VI-6. ” “,

	1991.	2002.	2011.
	319	240	192
	417	308	244
	482	390	304
	336	269	193
	337	283	204
	321	246	190
	396	327	229
	424	313	228
	111	86	73
	489	438	353

	535	425	392
--	-----	-----	-----

-

	269	220	135
	286	200	149
	226	163	98
	243	165	116
	5191	4073	3100

-

	434	250	154
--	-----	-----	-----

-

	821	653	705
	228	186	99
	67	51	50
	185	135	99
	139	80	50
	1440	1105	1103

-

	196	150	94
	309	183	113
	445	368	246
	259	177	89
	282	222	143
	1491	1100	685

-

	572	487	350
	345	293	228
	222	198	151
	127	94	68
	202	166	153
	246	205	183
	364	303	211

	138	108	79
-			
	256	175	79
	183	131	70
12	-	-	-
	128	109	84
	2783	2269	1656
” “	11339	8797	6598

:
2002. , 9 (2004) ,
www.citypopulation.de/serbia.

1991. 2002.
” “
2002. ,

2011. 2002. 52,
7,9%.

1991. 500
” “ , 2011.
” “ 500
” “ 2011.
, 50
” “ 1961.

1991. 2,2%
” “
, 10%

13.

12

13
40.

16 ” “ ,
(1992) , , .

1961. 2011. ,
 86% 90% (VI-7).

VI-7. „ “

	/	2011/1961	2011.	1961.
		9,6	79	819
		9,9	98	992
		12,3	70	571
		13,5	116	858

: 1948-2002. ,
 2002. , 9 (2004)
 , www.citypopulation.de/serbia.

„ “
 ,
 „ “
 1991. - 2002. ,
 „ “ 8‰,
 11,2‰¹⁴.
 „ “ ,
 2002. 1991. 23,3%,

¹⁴
 (2003)

2002. . 2, ,

„ „ , 1,1‰ 6‰

2011/1961 59,4 (VI-8).

VI-8. „ „

	/	2011/1961	2011.	1961.
		59,4	705	1187
		48	183	381
		43,6	151	346
		41,3	350	848

: 1948-2002. , 9 (2004) .
 2002. , www.citypopulation.de/serbia.

1991.

„ „
 1991. , /
 „ „
 (VI-9).

50 69 . „ „
 55 69

50 64 .

82%

VI-9. -

Град/Општина	Старост/ број ст.	0-4	5-9	10-14	15-19	20-24	25-29	30-34	35-39	40-44	45-49
Ивањица	5.191	173	169	291	292	290	218	287	279	287	273
Сјеница	434	42	40	32	43	46	48	36	19	22	18
Нови Пазар	1.440	139	102	103	123	140	115	89	64	58	78
Рашка	1.491	36	40	35	76	79	78	55	55	75	89
Краљево	2.783	104	101	138	183	182	124	158	207	179	167
Σ	11.339	494	452	599	717	737	583	625	624	621	625

Град/Општина	50-54	55-59	60-64	65-69	70-74	75-79	80-84	85-89	90-94	95-
Ивањица	424	551	569	446	269	183	131	49	10	-
Сјеница	22	24	18	10	10	2	-	2	-	-
Нови Пазар	97	101	90	54	40	24	13	7	2	1
Рашка	136	194	194	151	77	56	45	18	2	-
Краљево	253	237	253	204	129	79	57	22	6	-
Σ	932	1107	1124	865	525	344	246	98	20	1

“ (2000) , , . 90.

, , 15 29
31,5%

1991. “
3223 60 , 28,4 %
20 2262, 19,9 %

2002. „ „ 36,3 % 20 60
 „ „ 16,6 % 40
 20,9 %, 2,19¹⁵.
 2002. „ „ 55%, 20
 18,5 %. 80% 16.
 „ „
 90%,
 13%¹⁷.
 „ „
 60 30%
 18.
 „ „
 15 , 1991. , 48%

¹⁵ *Ibid*

¹⁶

(2003)

¹⁷

43.

¹⁸ *Ibid*, . 68.

25 % , 23 %
 , 4 % (VI-10).

VI-10. „ „, 15
 (%)

1981	28,5	35,4	19,5	14,0	1,4	0,9
1991	20,0	28,0	25,0	23,0	2,5	1,5

: (1992)
 , .157.

je

” “

¹⁹ *Ibid*, . 55-56.

3.

·

,

,

·

-

”

“

·

-

-

-

-

·

”

“

-

-

·

(-)

,

,

”

“

·

”

“

/

,

·

”

“

·

,

,

20
15
150
21
850 21
2021.
22
➤
➤
➤
➤

²⁰ , . (2001)

, *AEERT*,

²¹ , . 60.

²¹ , . (2009)

„Via-Vita“,

. 71.

²²

„ , 16/2009, , .104.

„ (2009) „

”

“

”

“

”

“

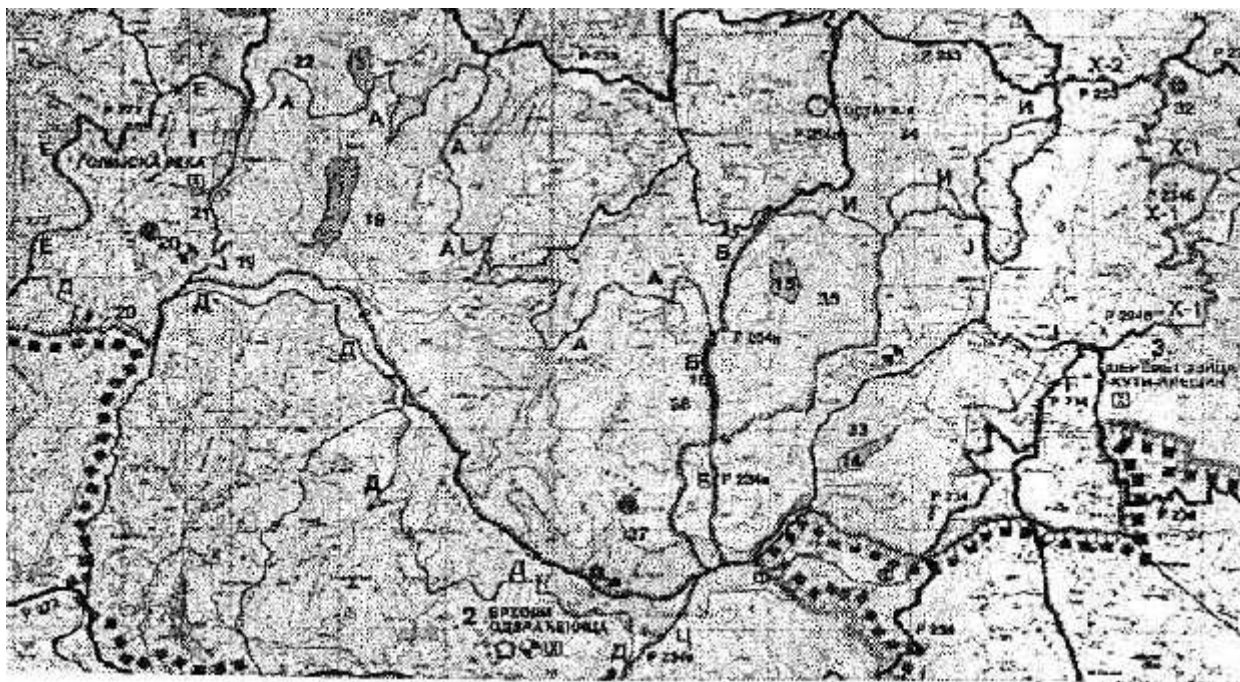
”

“

(Ma VI-2).

VI-2: ”

“



:

“, 16/2009,

” “ (2009) ”

,

,

,

” “ ” “

,

“

”

,

.

, ,

—

,

500.000

”

23

”

4

16.10.2012.

–
5,5

,

12

,

6

,

4

14

,

27

19

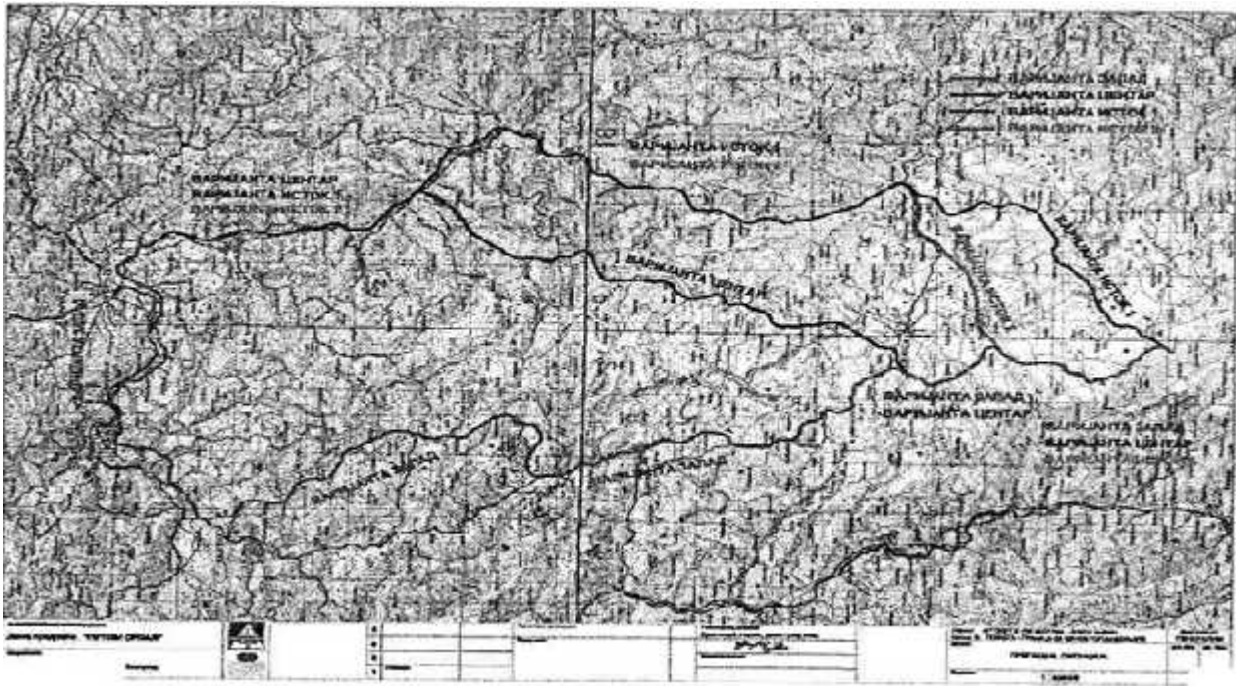
²³ www.ekapija.com/website/sr/page/Program-razvoja-opstina-u-jugozapadnoj-Srbiji-PRO

„ „ -763: -
 11, „ „

11

(VI-3).

VI-3.



: „ „ „ „ „ (2009)

„Via-Vita“, „ . 55.

24.

- „ (– – – – –),
- „ (– – – – –),
- „ 1“ (– – – – –)
- „ 2“ (– – – – –).

, 2008. , 1.
1,
, 50 , 500
, 11
, 10,
,
1,
„ “ „ “.
11, 2012. , *China Road*
and Bridge Corporation - CRBC. *CRBC-* 2,5
11
e 10 25.
„ “
1, 107 ,
,
„ “,
,
,
(VI-4).

²⁴ , „ , „ , . (2009)

„Via-Vita“,
, . 53.

²⁵ www.totalportal.rs/ekonomija/povezane-vesti/403515



: www.novosti.rs/Koridor-11

				2009.				
			860					
	11				40,3			2012.
								308
51%								
			26					

²⁶ Ibid

I II

1

I

II

2

13

36

4.

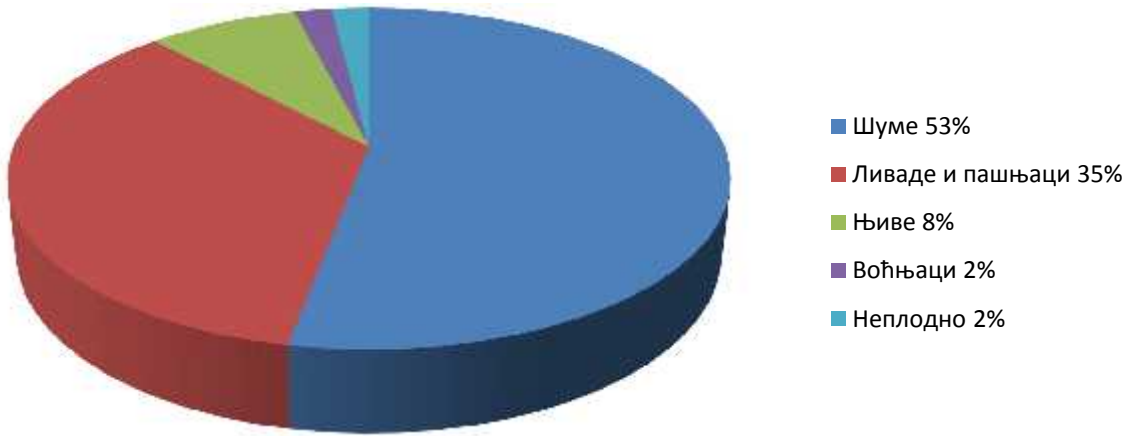
„ “ 39.528 , 53% ,
 33.641 45%
 35%, 8%
 2% (VI-3).

2%.

VI-3.

" "

" (%)



: (2000) , , . 108.
" " , 36%
64% .
27 .
I " "
II " "
III " "
" " .
, , , , , ,
" " .
, , , , , ,
38 , " " 17 44%

27 (2000) , , . 150.

1000 , 65%
 900 . . . (VI-11).

VI-11.

” “

()		%
< 700	4	11
700 - 800	3	8
801 - 900	6	16
901 - 1000	8	21
1001 - 1100	9	24
1101 - 1200	7	18
1201 - 1300	1	2
> 1300	0	0
	38	100

: (2000) , , .96.

” “ , , .
 , .
 , , .
 .
 ” “ ,
 , 1991.
 , .

1991-2002. 5
 ” “ ,
 25,6% 44% 32% 55%²⁸.
 ” “
 .
 2012. 2008. ,
 . 2.692
 23,6 % , 2.760
 48,4 % . ,
 7070 (VI-12. VI-13.).

2011. , 25.000
 , 4.000 ²⁹.

VI-12. ” “,
2008.

					100 .	100 .
	11.420	6.625	24.319	19.149	22	47
	20.218	14.061	18.946	13.212	25	23
	10.377	7.528	8.114	5.016	29	22
	5.698	4.527	10.619	8.395	17	32
	25.078	18.183	22.265	17.904	35	31

: 2008 (2009) , ,
 , .212 213.

2008. 17 100 ,

²⁸ (2009) ,, “ .
 16/2009, , 24.
²⁹ 2011.
 (2011) ,, “, 13/11, 8.

86 .

2008-2012.

905

16%.

2012.

” “

VI-13.

” “

2012.

	8.728	5.533	23.414	18.575
	27.288	17.214	30.324	21.950
	9.645	6.825	16.091	11.585
	2.938	2.113	14.060	10.580
	23.396	12.480	39.836	28.891

: 2012., (2013) , .30 32.

30

16/2009, .24.

(2009) ,, “ .

○
○

“ ” “ ”
80-
“ ”

“ 2011. ”

2011. 80%,

31

500

250

2012.

250

31

2011. (2011) „ “, 56/11,

”

“

•

,

;

•

,

;

•

;

•

;

•

;

•

•

”

“

,

,

”

“

,

,

,

,

1.000 . .

” “

， ，

” “33

” “

20 ，

50

10 5

60%

150 34

³³ ， (2010) ， ， .8.

³⁴ ， ， .17. (2008)

” “

“

” “

35

1.500

” “ 900

3,5

36

” “

()

” “

2008.

3

³⁵

(2000)

. 32.

³⁶ www.ivanjica.gov.rs/ivanjica/poljoprivreda

1.000³⁷.

7.500³⁸.

1.000, 2007.

14.).

VI-14. „ 2011.

/						
		.	,		.	,
	122.230	859	7,0	334.650	1.866	5,6
	1.830	6	3,3	5.400	26	4,8
	137.825	1.117	8,1	322.410	2.344	7,3
	86.483	830	9,6	424.639	3.847	9,1
	261.554	2.386	9,1	1.061.040	9.295	8,8

: , .185 186. , 2012. (2012) ,

³⁷

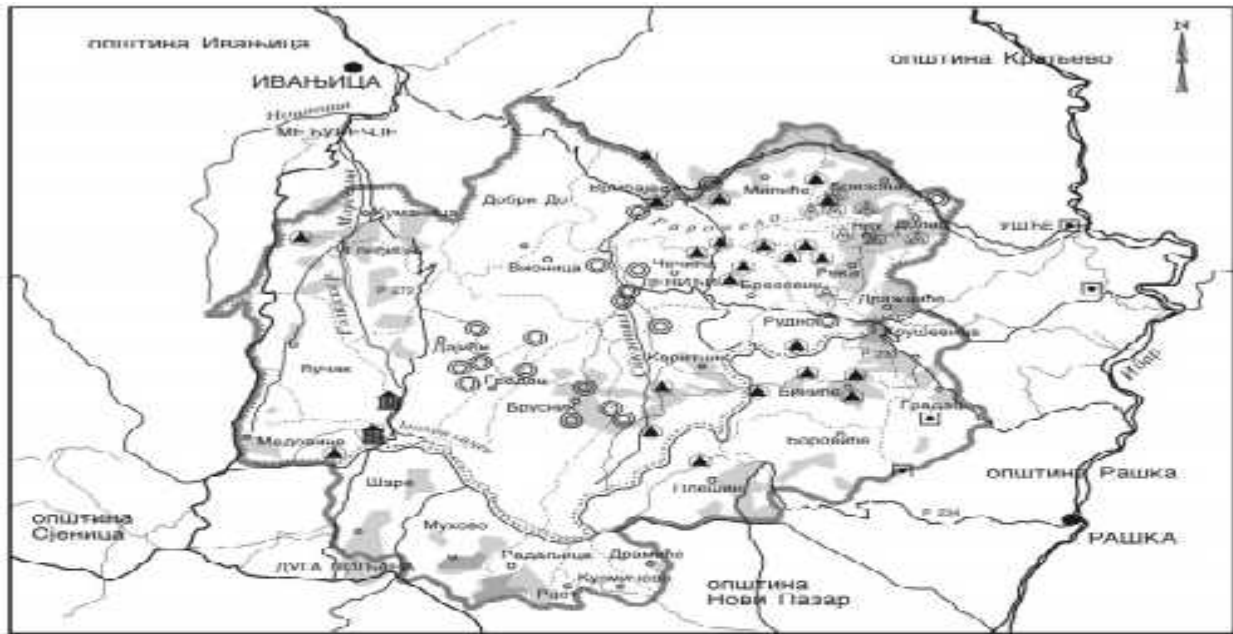
(1992)

83.

³⁸ www.ivanjica.gov.rs/ivanjica/poljoprivreda

5.

VI-5.



- | | | |
|--|---|---|
| <p>— Граница Националног парка "Голубац"</p> <p>..... Граница Регионалне биосфере "Голубац-Студеница"</p> <p>— Граница општине</p> <p>— Граница катастарне општине</p> | <p>1. Извор загађивања од пољопривреде</p> <p>☛ Веће фарме</p> | <p>3. Извор загађивања од саобраћаја</p> <p>— Магистрални пут (ширине)</p> <p>— Регионални пут (средња)</p> <p>— Општински пут (мањина)</p> |
| <p>2. Извор загађивања из индустрије</p> <p>☐ Рударство</p> <p>☒ Индустрија грађевинарских материјала</p> <p>☑ Петаљница</p> <p>▲ Млава</p> <p>☉ Дрвопрерађивачка индустрија</p> <p>☉ Стругаре</p> | <p>4. Извор загађивања од насеља</p> <p>ДЕВИЋИ</p> <p>Борониће</p> <p>Остала насеља</p> | <p>5. Ерозија</p> <p>■ Тешка ерозија</p> <p>■ Средња ерозија</p> |

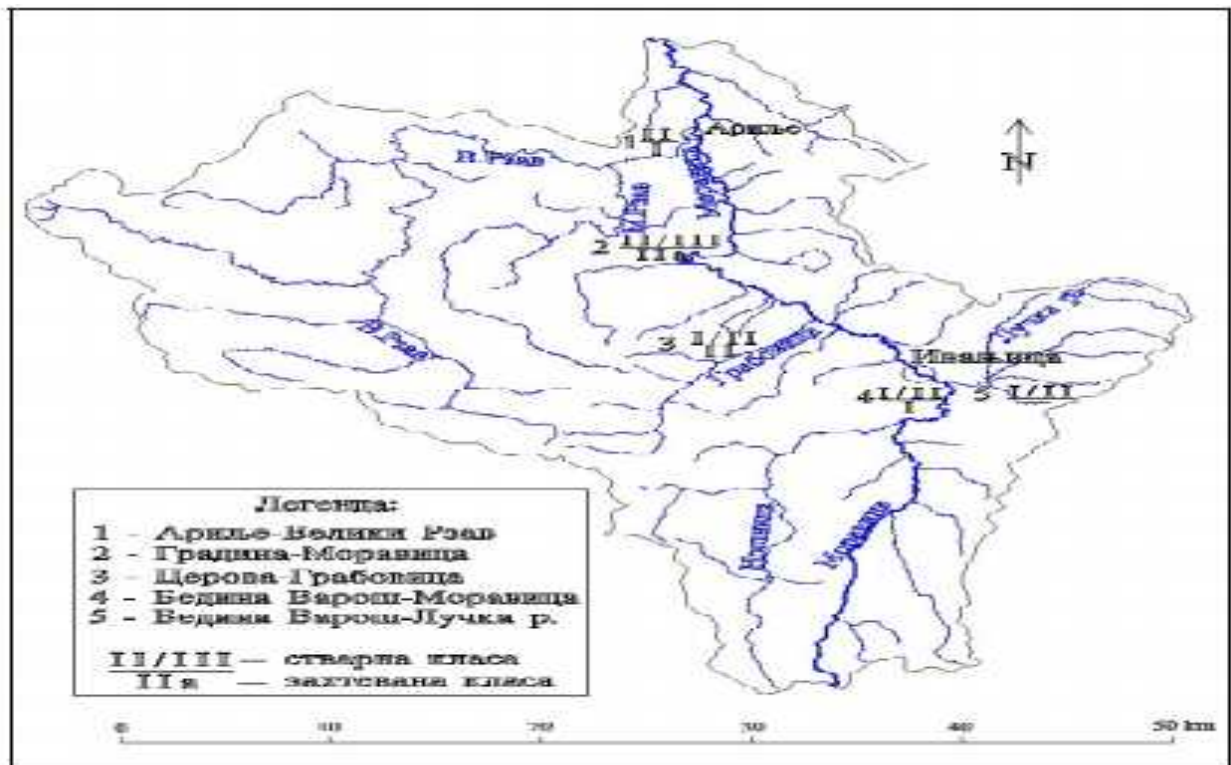
: , (2005) , . 261. ” “

I

I

I II (VI-6).

VI-6.



(2007)

.108.

1600

” “， II ，
39

，
，
，
，

” “
” “ 2021.

，
12

” “
” “

40

” “
9,5

-
” “
” “

” “
60 41

” “

39 2011. (2012)
40 ， ， .40-41. (2009) “，
16/2009, ， .26.
41 ， . (2014) ， - ，
， ， .40.

”

“

,

.

.

„Aqua com“

,

,

,

“ “

“

“

,

.

,

”

“

1100

. . ,

”

“

”

“

130

,

-

,

.

”

“

.

.

.

,

,

,

,

,

.

”

“

,

.

,

.

.

”

“

,

-

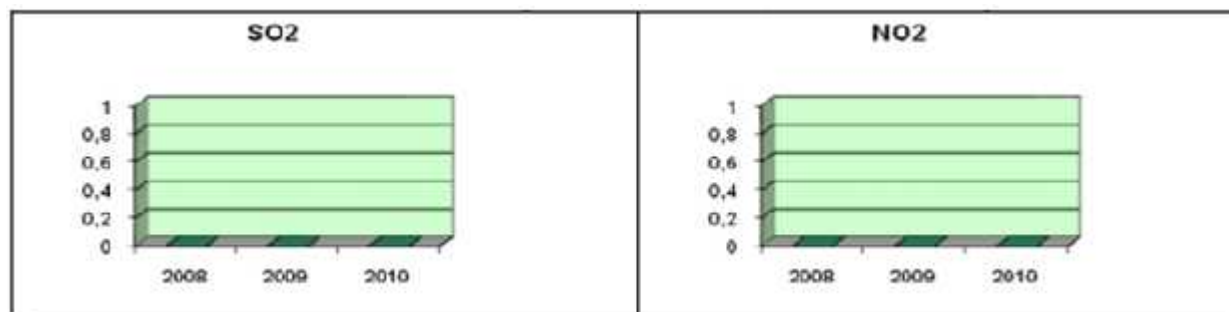
.

,

„ 70- 80- „ 2004. „MG Serbien-Baljevac“ „US Steel Serbia“, BMW-a. „MG Serbien“ 2008. 2010. (VI-15.).

VI-15.

	2008	2009	2010
SO2	0	0	0
NO2	0	0	0
	0	0	0



: ,

” “

25.

2000. 2.156,5 , ,

7 ”

“ , ” “

46.

” “

” “

” “

” “

⁴⁶ www.ivanjica.gov.rs/javna-preduzeca/srpski/ivanjica

47.

•

;

•

•

48.

1.

2.

3.

⁴⁷ , . (2009)

” “, , . 12.

⁴⁸ , ,, , . (2012)

Communities, , . 10-11.

, USAID,

Institute for Sustainable

6.

“ ”

49

213

50

I

- 1. - , XII
- 2. - , XIII

II

- 1. - , XVII
- 2. - , XVII
- 3. - , XV

⁴⁹ (1994) „ „, 71/94, ,

2.

⁵⁰ „ „, . 111.

(2000)

- 4. - , XIV
- 5. - , XIII
- 6. - , XIII
- 7. - , XVI
- 8. - , XII

III – (,)

- 1. - , XVII
- 2. - , XIX
- 3. - , ?
- 4. - , XIX
- 5. - , XIX

IV – ()

- 1. - , XV
- 2. - , XVII
- 3. - , ?
- 4. - , XVI-XVII

V

VI

UNESCO 1986. , , , , 262 , ,
51.

⁵¹ , . (2007) , ,
–IDA, , .3-4.

” “，
57 12 .
() ，
2012.
13. .
XII
1208.-1209. ，
60.000 ，
XIII
1314.
XVII
(XVII)，
(XVII)， (XV)，
(XIII)。
1207. 1215.
()， .

1994.

52

” “

12

5

1.100

XIII

I

I

I je

2014.

700

53

XX

1947.-1948.

1963.

1975.

1990.

⁵² *Ibid*, . 7-8.

⁵³ www.spc.rs/sr/dani-kraljice-jelene

2005.

“.

”

-

,

,

20

“

”

2012.

,

-

”

“.

,

”

“

,

, 2012.

,

”

“.

2012.

”

“

,

54

,

,

3

,

XVI

2007.

XIV

,

55

⁵⁴ www.rts.rs/page/stories/1094848/dani+jorgovana

⁵⁵ (2007)

-IDA, , .2.

(VI-7).

VI-7.



(2013)

XII

1988.

2007.

25 , -
- - , XVI ,
je ,
. XII XIII
, , “ 2010.
’
56 .
” “
XV .
’ “
. ” “
” “
, ” “
, 14
, 2,40 4 ,
’
57 .
” “
1979.
UNESCO- , ” “
” “
, (XIII) (XII),

⁵⁶ www.blic.rs/ vesti/srbija/monahinje-ozivele-manastir-Kovilje

⁵⁷ , . (2007)
- IDA, , .16.

(IX).

” “

2007.

“ 58 .

” “

60

XII XIII .

” “

VII)

1.

⁵⁸ www.councilofeurope.int/transromanica

for Standardisation- ISO)

(International Organisation

ISO 14000,

ISO 14000

ISO 14000

59.

ISO 14000

60.

-
-
-
-
-

ISO 14000

, a o

ISO 14001

ISO 14000

⁵⁹ *Environmental management, The ISO 14000 family of International Standards* (2009) International Organization for Standardization, p. 4.

⁶⁰ *Ibid*, p. 8.

ISO 14001

ISO 14001

ISO 14001,

ISO 14000,

British Standards Institution – BSI,

. BSI

ISO 14001,

VII-1.

VII-1.

ISO 14001

: www.bsigroup.com/Documents/iso-14001-client-manual-UK

⁶¹ *Ibid*, p. 9-10.

ISO 14001

,

.

,

,

/

ISO 14001

-

,

,

ISO 14001.

2009. , 159

223.149

ISO 14001⁶².

,

/

,

”

“

-

”

“

,

”

-

“

”

“

”

-

“

2009.

ISO

14001:2004

,

2012.

⁶³.

”

“

ISO 14001, ISO 9001 HACCP

,

,

⁶² Baumann, T., Kollmuss, A. (2010) *GHG schemes addressing climate change – How ISO standards help*, International Organization for Standardization, p. 14.

⁶³ www.np-put.rs/standardi

5%

64

” “
ISO 14000

2006.

“65

ISO 14001.

66

⁶⁴ www.saneko98.com/.../aktivnosti%202008

⁶⁵ Knight, W. (2006) *Eco-Resorts Turn White Slopes Green*, the New York Times, 19.11.2006, US.

⁶⁶ Madigan C., (2006) *Chris Madigan on the Environmental Impact of Ski Resorts*, Guardian, 23 Dec. 2006, UK.

ISO 14001

(Lech)

1.450

100

200

50%⁶⁷.

ISO 14001:2004.

2000.

Kriegerhorn.

2173

15.000 kWh,

⁶⁸.

-3 °C

⁶⁷ *Ibid*

⁶⁸ www.lechzuers.com/development

69

14000,

/

”

“

2. Cost-benefit

Cost-benefit (CBA)

. CBA

CBA.

70

CBA

CBA

⁶⁹ Tonge, V. (2007) *A Case Study of Lech, Austria, Examining Effective Destination Management Strategies in Ski Resort*, International Centre for Responsible Tourism.

⁷⁰ , , Toft, D. (2009) , USAID, , .53.

, () ⁷¹:

$$= \left\{ \frac{1}{(1+r)^1} + \frac{2}{(1+r)^2} + \dots \right\} -$$

:

$$= \frac{1}{(1+r)^1}$$

-
-
-
-
-
-

()

Cost-benefit

>0.

=0,

⁷².

⁷¹ , . (2008) , , . 343.

⁷² *Ibid*

24180

(VII-1).

VII-1.

	()	(/ .)	:	(/ .)
	34700	9070	15110	24180
	73200	5210	8680	13890
	32610	4900	8160	13060

: (2008) USAID, , .50.
 ” “,

” “,

(VII-2).

10 18 %,

76.

⁷⁶ , ., et al. (2007)

, , .4.

VII-2.

• " "		
1.	-539	8570
2.	-635 (4)	2970
3.	-618	2960
4.		6500
:		21000
•		
1.	, <i>Brik MB 110</i>	25000
2.		12500
3.		4000
4.		5500
5.	je	3000
:		50000
•		25750
		96750

: , , , . (2007) - , .156.

1000 ,
 1000 .
 ” “ ,
 ” “ 27 € , 7
 (VII-3.).

VII-3.

A.		
1.	(27 € - ” “)	27000
2.	(7,84 €)	15680
:		
3.		35
4.		1846
5.	(6 €)	12000
6.	()	1500
		58061
.		
7.		290
8.	(20%)	4896
		5186
B.	(4)	24480
		87727

: , , . (2007) - ,
 , 157-158.
 ,
 7,84 € . ,
 , 6 € 77.

4 , .

6120 . Cost-

benefit

78:

- ,
- ,
- .

80 € .

2000

160.000 €

10 ,

(VII-4.).

VII-4. ()

Структура	Године трајања пројекта					
	0	1	2	3	4	10
I ДОБИЦИ	-	160000	160000	160000	160000	160000
II ИЗДАЦИ	96750	87727	87727	87727	87727	87727
Опрема	71000	-	-	-	-	-
Обртна средства	25750	-	-	-	-	-
Материјални трошкови	-	58061	58061	58061	58061	58061
Нематеријални трошкови	-	5186	5186	5186	5186	5186
Плате	-	24480	24480	24480	24480	24480
НЕТО ДОБИЦИ (I- II)	-	72273	72273	72273	72273	72273

:

⁷⁸ , , Toft, D. (2009) , .68-69.

, USAID,

” “ 96750 .
 , 2007-2013. ,
 5%⁷⁹.
 96750
 , 5%, 10
 5 % , 1/(1+0,05)^t,
 (VII-5.).

VII-5.

0	0	1	0
1	72273	0,9524	68833
2	72273	0,9070	65552
3	72273	0,8638	62429
4	72273	0,8227	59459
5	72273	0,7835	56626
6	72273	0,7462	53930
7	72273	0,7107	51364
8	72273	0,6768	48914
9	72273	0,6446	46587
10	72273	0,6139	44368
			558062

:

558062 .

⁷⁹ , . (2009) *Cost-benefit* , Business Start-up centre, , . 27.

$$= 558062 - 96750 = 461312$$

4,7711

willing to pay – WTP,

Cost-benefit

<0,

>0.

<0

80

⁸⁰ *Ibid*, . 52.

3. SWOT

SWOT (*Strengths, Weaknesses, Opportunities, Threats*)

SWOT

SWOT

SWOT

SWOT

VII-6.

45%

35%

26.294

⁸¹ Kotler, P. (2002) *Marketing Management*, Millenium Edition, Pearson Custom Publishing, Boston, USA, p. 46-47.

VII-6. SWOT

—

” “

<ul style="list-style-type: none"> ● ● ● ● ● ● ● ● ● ● 	<ul style="list-style-type: none"> ● (65%) ● 900 ● ● ● ● ● ● ● ● ●
<ul style="list-style-type: none"> ● ● ● ● ● <p>RD</p> <p>IPA-</p>	<ul style="list-style-type: none"> ● ● ● ●

:

” “

· , ” “

, ” “
· ” “

” “ ” “

, ” “ ”

“ 1.000 200 , ” “
1985-1992. , 2.000 1.000 . ,

” “

” “, 94,2% , III

, ·

” “

- · ,

, ·

” “ ,

· ” “

·

ISO 14001:2004.

1.500

11

Emilia-Romagna

2011.

250

4,21%

2013.

5%

83

2012.

V

IPA

IPA-RD,

2014.

„ SWOT

VII-7.

„ “

, 2001.

UNESCO „

„ “

”

-

“

„ “

83

10/13, , 4.

(2013) „

“

VII-7. SWOT

<ul style="list-style-type: none"> • (•) • - • , • • • ” “ • • 	<ul style="list-style-type: none"> • • • • • • ISO 14000
<ul style="list-style-type: none"> • ” “ • ” “ • • • • ’ • ” “ • 	<ul style="list-style-type: none"> • (•) • •

. K

” “

” “ ”

.

” “

， - ， ，

84 .

20

， ， “

， ，

ISO 14000

，

.

” “

，

65

.

.

， ， ，

， .

.

85 .

SWOT

a

” “

.

” “

” “

84

” “ (2009) ”

85

“， . 16/2009”， ， . 175.

(2007)

， ， ， - ， .

87.

-

-

-

,

,

-

-

-

,

()

-

88.

• 600

;

• 900

;

• 400

• 200

-

,

50% 75%,

,

.

-

, 2002.

-15,

30,2

,

2

89.

-

2007.-2013.

II

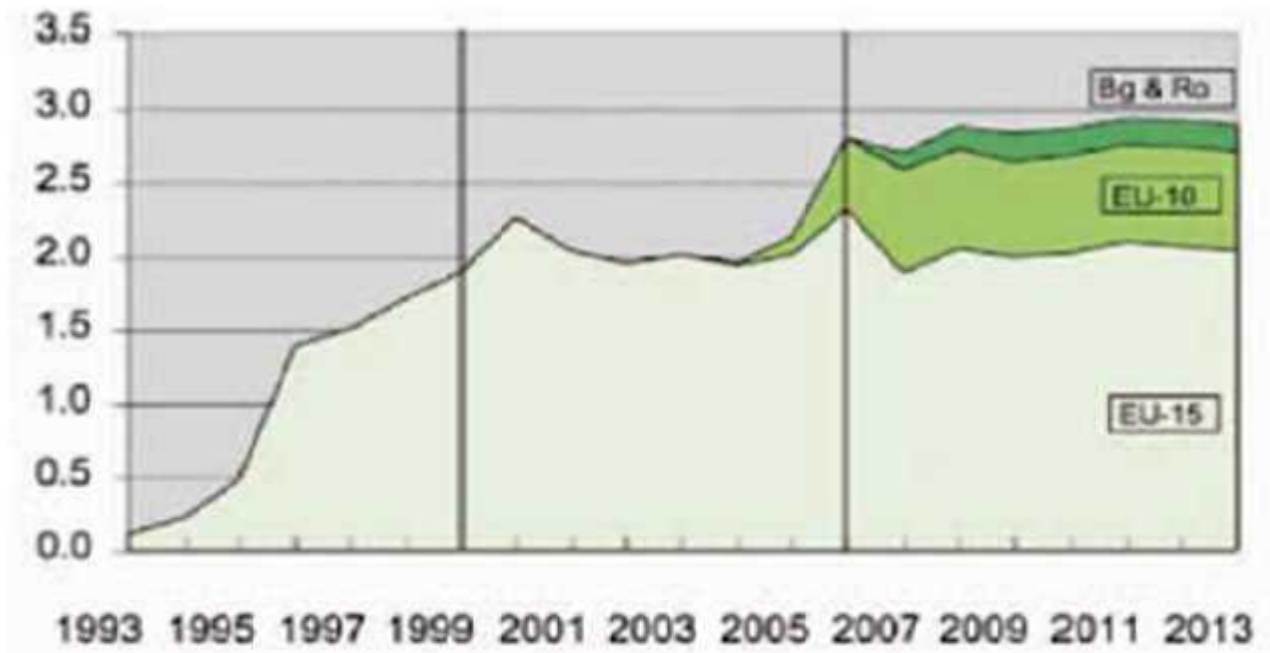
,

⁸⁷ Council Regulation (EC) No 2078/1992, Article 2.

⁸⁸ Council Regulation (EC) No 1698/2005, Annex - amounts and rates of support.

⁸⁹ Bavec, F., Bavec, M. (2011) *Situation, experiences and expectation in agriculture and agri-environmental measures after acceptance of European Common agricultural policy (CAP) in Slovenia*, Proceedings of 46th Croatian and 6th International Symposium on Agriculture, Opatija, Croatia, p. 20.

1993. 2013.
 2013. 3 VII-1.
 VII-1. (



: Cooper ., Pezold T. (2011) , IUCN, Gland, . 54.

2001. 22 10 2001. , 12 2002. 2001. 11.400 90.000 2002. 10,4

90.

I)

II)

III)

IV)

38.900 , 286.070 2006.-2009. , 50%. 2009. 73.704.057

91.

⁹⁰ Petersen, J.E., Feehan, J. (2003) *Agri-environmental programmes and the candidate countries*, International Conference: EU: CAP and Enlargement – An Opportunity for Nature and Environment, Institute for International and European Environmental Policy, Potsdam, Germany, p. 2-3.

⁹¹ Bavec, F., Bavec, M. (2011) *Situation, experiences and expectation in agriculture and agri-environmental measures after acceptance of European Common agricultural policy (CAP) in Slovenia*, Proceedings of 46th Croatian and 6th International Symposium on Agriculture, Opatija, Croatia, p. 23-24.

” “.

-

200 100

0,5 1,9

80

92.

2010.-2013.

93.

a)

)

(GIZ, UNDP,

FAO, USAID),

IPA

⁹² Cooper, ., Pezold, T. (2011)
 , .57.

⁹³ 2010-2013 (2009)
 , .49.

, IUCN, Gland,

2014.

5.

„ (VII-1).

35
15

VII-1.



www.balkanmagazin.net/hrana/cid143-29444

100 150

94

10

50 100

95

” “

.

,

,

.

ICS (*Internal Control System*)

” “

96

,

.

,

,

.

30% 50%

.

” “

,

” “

.

” “

,

40 %

.

⁹⁵ www.vremekupovine.rs/140-organska-proizvodnja

⁹⁶

2013.

1.202.721.780

200.000.000 ⁹⁷.

*Bioagricert, Ecocert Balkan, Evrocert, Jugoinspekt Beograd, SGS-Beograd, Suolo e salute Balkan, Pancert i Organic control system*⁹⁸.

, 21.06.2013. , *Organic control system*

Organic control system-

⁹⁹.

Organic control system-

” “,

,

” “

49%,

¹⁰⁰.

57,45%

” “

⁹⁷

, 8.

⁹⁸ www.rpkns.com/en/aktuelno-poljoprivreda/1412

⁹⁹ www.organica.rs

¹⁰⁰ www.ivanjica.gov.rs/206-organska-proizvodnja

2013. (2013)

„Mondi Serbia“,

. O

BIOfach

„Mondi Serbia“ 2008.

101.

” “ ,

” “ ,

” “ ,

” “ 102

” “ ,

” “ .

(, ,

) ” “

” “

” “ 22.02.2013.

1 0,05

/ 103.

” “

” “

” “

¹⁰¹ www.mondiserbia.rs/documents/ecocert

¹⁰² , .. , . (2010)

¹⁰³ “ , . 84.

” “ 2230 (2013)

” “ ”

” “

” “

” “

20

104

” “

” “ 2013. ”

” “ ”

” “

”

104

(2008)

. 20.

“

,

105

,

”

“

”

“

,

2013.

106

”

“

.

,

”

“

.

,

”

“

.

105

, . (2013)

106

, . (2013)

VIII)

” “

1.

” “

” “ 2001.

” - “,

/ , UNESCO (*United*

Nations Educational, Scientific and Cultural Organization)

” “

(„*Man and Biosphere - MaB*“)¹⁰⁷.

1974.

” “ („*MaB*“),

1976.

„*MaB*“

„*MaB*“,

108.

1.

2.

3.

¹⁰⁷ *Biosphere reserves: The Seville Strategy and the Statutory Framework of the World Network* (1996) UNESCO, Paris, Article 1.

¹⁰⁸ *Ibid*, Article 3.

21,

621

117

12

109

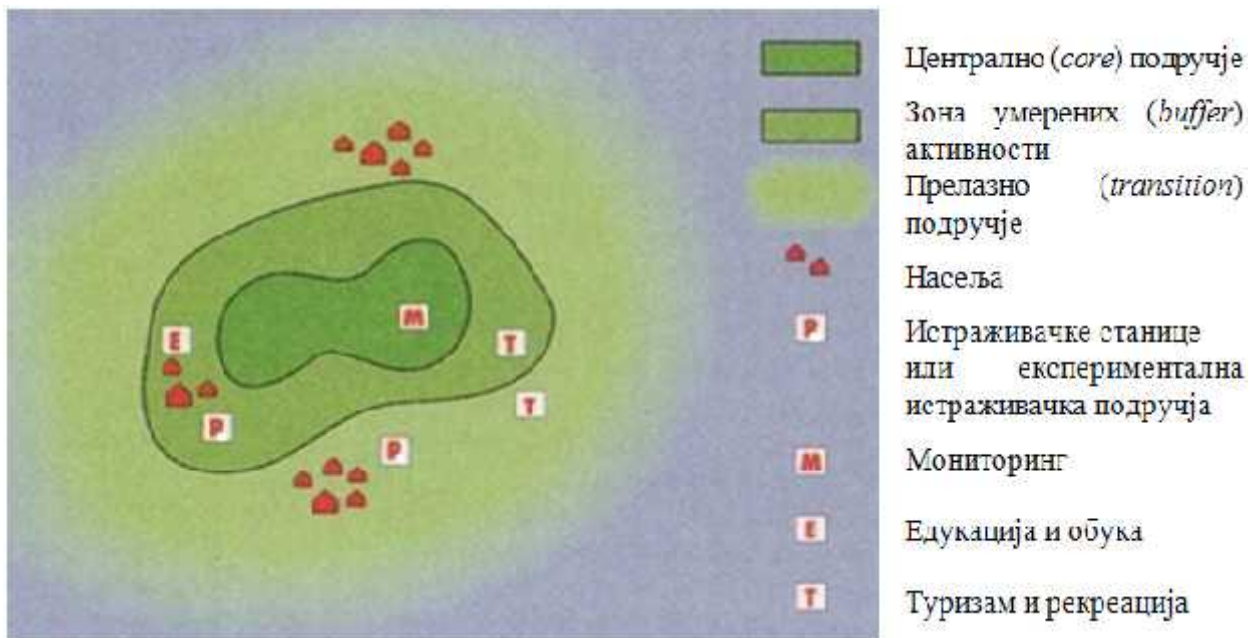
(core) , (VIII-1.).

(buffer)

(transition)

(

VIII-1.



” : , , . (2012)

” “ . 19. ”

¹⁰⁹ www.unesco.org/new/en/.../biosphere-reserves/world-network

(core)

e

(buffer)

(transition)

. UNESCO

110:

1. , ;
2. ;
3. , ;
4. ;

¹¹⁰ www.blbra.ca/faq/benefits-of-a-biosphere-reserve

5.

6.

„ - “ je 2001. , “
UNESCO „ “

(„MaB“).

„ - “ ,
„ “ , 73 %
„ “ (VIII-1).

VIII-1.

”



, 2004.

19 8 ” - “ 27 (),
 111.
 - , 11 : , , , , , , , , , ,
 , , , , , , , 4 : ,
 , .
 - , 8 : , , , , , , , , , ,
 4 : , , , .
 ” — “
 ” “
 ” - “ (core)
 497 , (buffer) 3.661 (transition)
 49.646 112.
 ” - “
 ,
 2012.
 ” -
 “ ” “
 ” “
 ” .
 ,
 113.

UNESCO ” “ ” “ (World Heritage).
 ” “
 UNESCO ” “
 , 1986. UNESCO
 ,
 ” - “
 ,

111 (2009) ,, “, .
 16/2009, . 7.
 112 www.sitiunescoadriatico/.../Svamesta/Studentica
 113 www.sombor.rs/eko-skola-golija-studenica

2.

“ (bottom-up).

2007.

” “ ” “

a „ “ (bottom-up), 2007. ,

– IDA“

UN Habitat

2007. , ” ,

“114

” ,

65

” “

“ ” “ ”

115

“ ” “ ” – IDA“

” “ ” , 11.

2007. , .

26 , .

116.

- “ ”
- “ ”
- “ ”
- “ ”
- “ ”
- “ ”
- “ ”

” “ *PLA/PRA*

21 8

13 . PLA (, ,) ,

(VIII-1.).

115 “ (2007) , .4.

116 (2008) , .3.

VIII-1.

PLA

<ul style="list-style-type: none"> • (, , ,) • • • • () • • • () • (” “) • • • () • • 	<ul style="list-style-type: none"> • • “ ” • “ - ” • ” “ • • • • • • • • • • • • •
--	---

: , ” , . (2008) *PLA/PRA* , .11. ,

” “ ” - “ ;

” “ ,
“ ” ,
 ,
 .
 ” “
 ,
 .

– IDA

10.000

1911.

¹¹⁷ .

1980-

”

– CRDA”,

ACDI/VOCA,

USAID-a 40.000 ,

¹¹⁷ *Ibid*, . 16.

10-

60

1970.

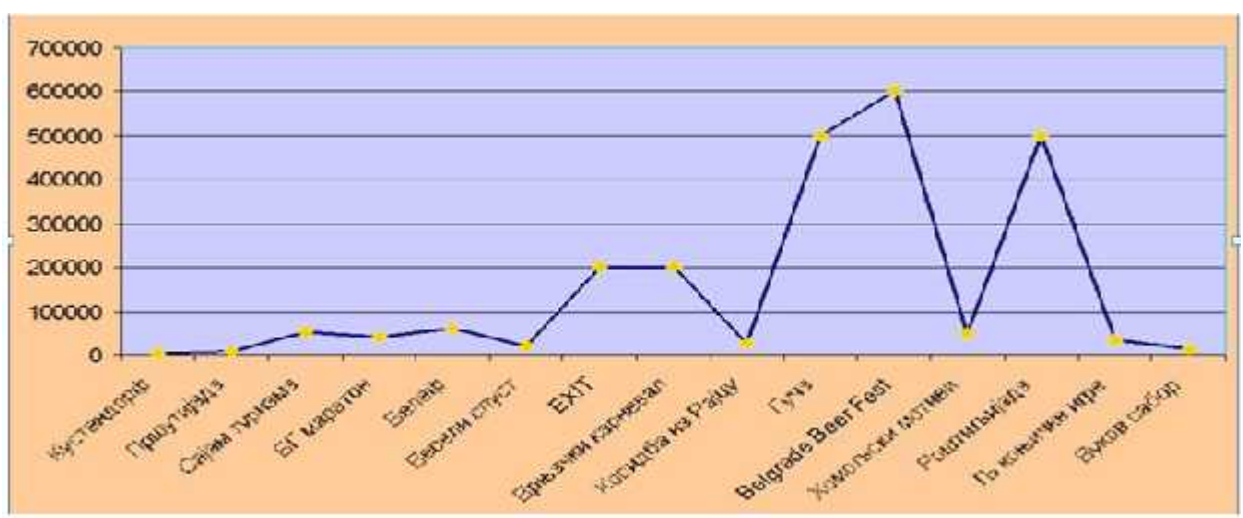
150

„Bayer CropScience“,
2008.

300

” “ ” “ , 30- ” “ 150 20 10.000 (VIII-1).

VIII-1:



: www.turizam.mfp.gov.rs

70%

118 www.turizam.mfp.gov.rs


” “
’
.
.
80-
’ ’ ’
’
90-
.” “
” - “ ’
2011.
” “
’ ’ ’
20
UNESCO MaB
UNESCO
’
’
UNESCO, 23. 2012.
119
” “
’ ’
.

, 2008. ,

” “ ,
“ ,
” “
(VIII-2).

VIII-2.

“ ”

		
•		
•	“ ”	“ ”
•	— ” “	“ ”
•		“ ”
•	“ ”	
•	“ ”	“ ”
•	“ ”	“ ”
•	“ ”	“ ”
•	“ ”	“ ”
•	“ ”	“ ”
•	“ ”	“ ”
•	— ”	“ ”
•		<i>Media club Sfera,</i>
•		“ ”

: www.kraljevskiodmor.com

¹²⁰ , . (2009)

, “
” “

3.

” “

” “

” “

” “
” “

” “
, , , ,

” “
” “ 300

1.000

124

” “

,
1.600 1.700

” “

2010.

” “
600.000 .

- , ,

() “ ” “
1.744 .

, 8,6 “ ”
” “125 .

, “ ” “
” “ 110 .

- , .

” “ 40 .

” “ 40
1.408 .

” “
” “

¹²⁵ www.golija-turizam.com

4 5 ¹²⁶.

” “, 92 , .

“ .

, 2008. , .

” “ 2.300 ,

1.418 . . . , 1.800

. 1.780 , 1.200

. , 9

- , ¹²⁷.

“ .

” “ .

1979. 1.350

, () 450

” “

-

(269)

UNESCO

¹²⁶ , . (2006) ,

, . 162.

¹²⁷ www.skijanje.rs/golija_nove_skijaske_staze

“ “ “ “

, , , , , .

” “ , .

, , ,

” “ ,

128 .

,

” “ .

”

“

” “ ,

” “ 2009.

” “ .

” “

2021. ,

129 .

” “ ,

- .

130 .

- ,
- —

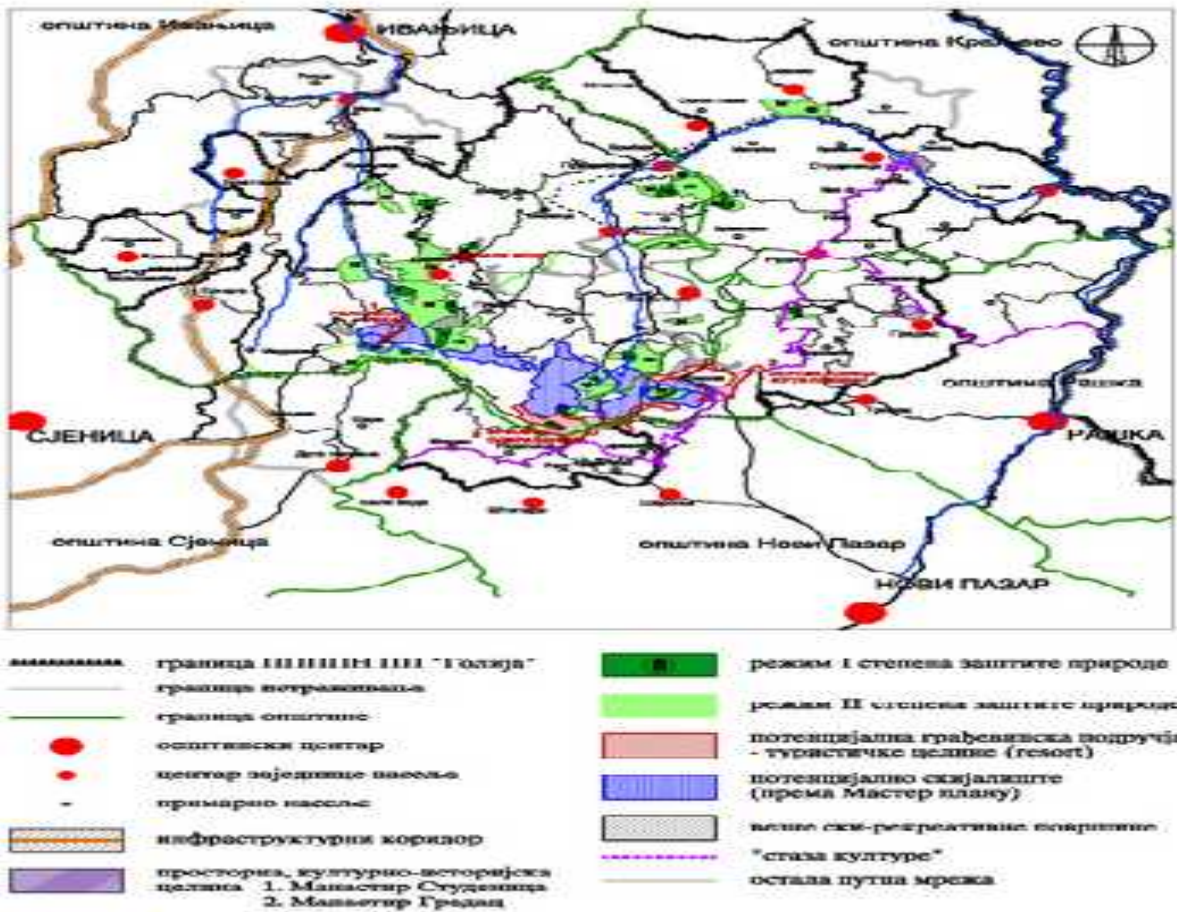
128 , .. , . (2004) , , . 13.

129 “, . 16/2009”, , . 3. ” “ , ”

130 *Ibid*, . 104.

„ (1833 . . .)
 „ (1.744 . . .)
 „
 „ (VIII-2).

Мапа VIII-2.



, 2004.
 6,5 7,5

16.800

131 „ „ 25.000
 10
 „ „ 9.000
 „ „
 „ „ 7.400
 (VIII-3).

VIII-3.

Тип/Врста лифта	Д8Г	Поче тници	Д4Ц	Д4Ц	Д4Ц	Д4Ц	Д4Ц	Д4Ц	Σ
Највиша тачка (м)	1.800	1.720	1.800	1.800	1.800	1.740	1.737	1.737	-
Најнижа тачка (м)	1.712	1.640	1.418	1.522	1.570	1.522	1.467	1.393	-
Вертикални метри	88	80	382	278	230	218	270	344	1.843
Хоризонтална дуж	870	450	1.420	1.530	1.030	1.200	1.110	1.530	-
Дужина нагиба (м)	874	457	1.459	1.555	1.055	1.220	1.142	1.568	9.330
Просечан нагиб %	10%	18%	24%	18%	22%	18%	24%	22%	19%
Скијаша по дану	270	300	1.190	1.370	1.140	560	1.210	1.360	7.400

: (2007)
 , , .127.

„ „
 „ „
 132

¹³¹ Ibid, . 178.

¹³²

36/09, , 3.

(2009) „

„, 135/04

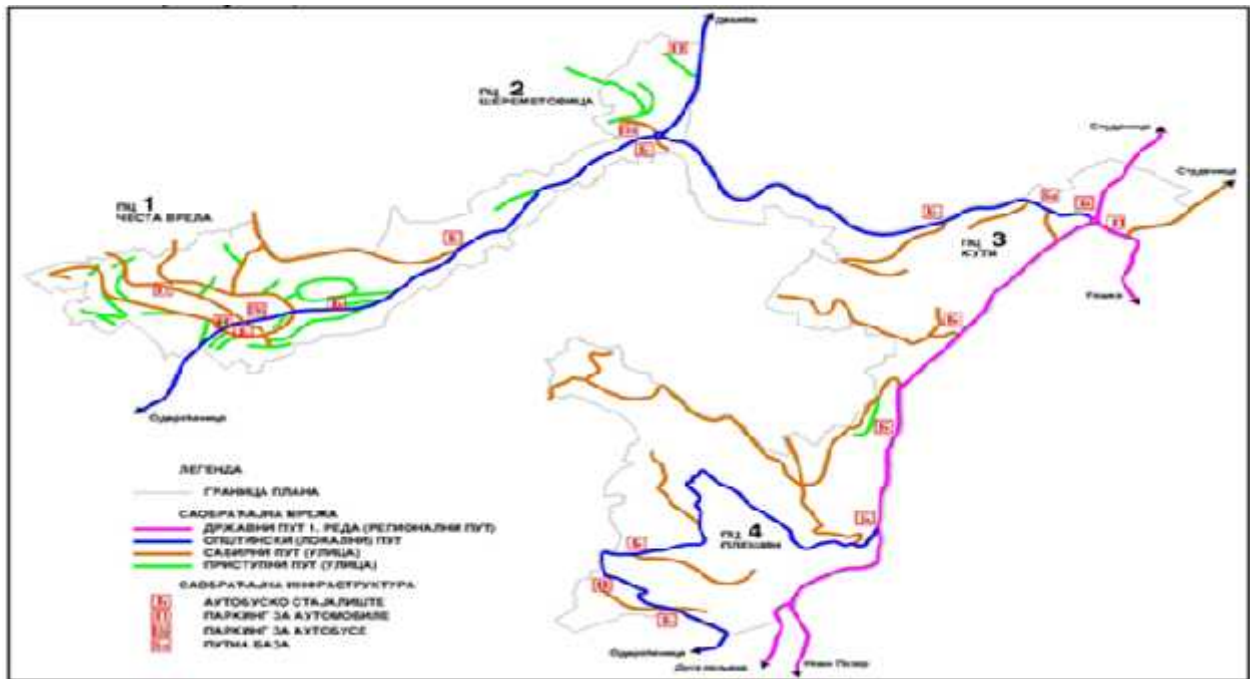
(,).

500 .

1.500 ,

(VIII-3).

VIII-3.



(2010)

.25.

(1795 . . .)

“ ”

133

800 1000

3.000 134

10.000 15.000

30% 50%

6 MW

6 MW 135

133

15.

134 *Ibid*, 16.

135

(2007)

144.

(2010)

“ ”

’

” “

” “

’

’

” “

136

’

” “

’

’

” “

’

136

“ 16/2009”, , 7.4.1., . 141.

” “ ”

-
- , , , .
 - , - , .
 - , .
 - (Sustainable agricultural and rural development) - SARD .
 - , .
 - : , .

•

,

,

:

,

,

,

,

-

,

.

.

•

”

“

”

,

-

,

,

,

:

,

,

,

.

.

•

”

” (*Leader*)

),

(

,

,

)

(

),

.

•

.

,

,

,

,

.

•

• ,

• ,

,

.

.

•

" "

,

: (1)

; (2)

,

; (3)

,

; (4)

(),

; (5)

; (6)

; (7)

;

(8)

.

•

,

.

•

,

,

,

.

.

,

,

,

,

,

,

,
 .
 •
 ,
 ,
 .
 :
 ,
 . 18%
 , 1,2-2,2
 5-9
 .
 •
 ,
 .
 ,
 e
 .
 „ *(Total economic value-TEV)* „
 ,
 .
 •
 „ “
 (, ,),
 .
 „ “
 , „ I .
 ,
 ,
 „ “
 , 2008. 2010. ,
 - , -

• *LEADER*

() .

1991.

- " " /
- , , .
- , , , , , .
- " " 213
- UNESCO 1986.
- " ", ISO14000 - ISO 9000,
- HACCP, ISO 22000 -
- , , , " ",
- SWOT .
- , .
- , " " " " ,
- 2007. .

"

- " ,

,

" "

"

,

.

•

” “

,

.

" "

.

,

LEADER

,

"

"

-

,

,

,

,

,

"

"

•

,

.

,

,

,

” “

,

.

.

,

,

.

,

.

•

(

,

,

,

,

,

.)

,

,

,

.

”

“

,

.

• , , ().

,
.

• (, ,
)

,

• , 2009–2013, 2014-2020.

, ,
” “.

• , , 2020 - „ ”, „ ”
” ” (, ,

, ,
” “ , ,

) (*engl. CAP – Common
agricultural policy of the EU*), :

; ;

.

• , , ,
je

(PHARE, SAPARD, ISPA CARDS),

(*Instrument for Pre-Accession Assistance – IPA*).

, IPARD (*Instrument for pre-accession assistance*

- rural development) -

(Multi-Annual Indicative Financial Framework-MIFF),

2007-2013.

1,39

I II

IPA.

： ， — — —
“ (1833 . .)
” “ (1.744 . .)
10
“ 7.400
” 9.000
“
” “
10.000
30% 50%

-
1. Ajzen, I. (1985) *From intentions to actions: A theory of planned behavior*. Book chapter in Action Control: From cognition to behavior, Springer Verlag, Heidelberg.
 2. Baumann, T., Kollmuss, A. (2010) *GHG schemes addressing climate change – How ISO standards help* (2010) International Organization for Standardization, p. 14.
 3. Bertolini, P., Montanari, M., Peragine, V. (2008) *Poverty and social exclusion in rural areas*, European commission, Directorate-General for Employment, social affairs and equal opportunities, Rome, p. 14-27.
 4. Bontron, J. C., et al., (2007) *Rural Europe: Definitions, Issues and Policies*, Foundation for future generations, Namur, Belgium, p. 25.
 5. , , Toft, D. (2009) , USAID, . 53-69.
 6. Bureau, C., Gohin, A. (2009) *Farm support policies in the European Union: An appraisal of their non-distortionary effects*. Book chapter in Non-distorting farm support to enhance global food production, FAO, Rome, p. 149.
 7. Buhalis, D., Costa, C. (2006) *Tourism business frontiers: Consumers, Products, Industry*, Butterworth Heinemann, Oxford.
 8. , , . (2008) *PLA/PRA* , , . 11.
 9. , , , , . (2008) , , . 73-135.
 10. , . (1989) , , “ , 461-531.
 11. Gercheva, D. (2003) *Local sustainable development planning*, UNDP, Bratislava, p. 20-59.
 12. Davis, J. R. (2004) *The Rural Non-Farm Economy, Livelihoods and their Diversification: Issues and Options*, Natural Resources Institute, UK, Chatham, p. 3-7.
 13. Desai, B.K., Pujari, B.T. (2007) *Sustainable Agriculture: A Vision for Future*, New publishing agency, New Delhi, India.
 14. , , , , Kusen, E. (1997) *Guidelines for Carrying Capacity Assessment for Tourism in the Mediterranean Coastal Areas*, United Nations Environment Programme - UNEP, Split, p. 5.
 15. , . (2008) , , . 343.
 16. , . (2009) , , . 62.

17. , , . (2012) , USAID, Institute for Sustainable Communities, . 10-11.
18. Jorgensen, S.L., et al., (2005) *Empowering People by Transforming Institutions: Social Development in World Bank Operations*, The International Bank for Reconstruction and Development, Washington, p. 2.
19. Kotler, P. (2002) *Marketing Management*, Millenium Edition, Pearson Custom Publishing, Boston, USAp. 46-47.
20. Lougheed, J. (2009) *A selection of Leader + best practices*, European Observatory of rural areas, Luxembourg, p. 15-17.
21. Lucas, P., (1994) *Protected areas management categories*, International Union for Conservation of Nature - IUCN, Gland, Switzerland, p. 7.
22. Malthus, T. (1798) *An Essay on the Principle of Population*, printed in St. Paul's church, London, Chapter II.
23. Meadows, D. H., Meadows, D. L., Randers, J., Behrenes, W.W. (1972) *The Limits to Growth*, Universe Books, New York, p. 124.
24. , . (2000) , .
25. , . (2004) 21: , .97.
26. , . (2009) , , . 56.
27. Mishan, E. J. (1969) *The Costs of Economic Growth*, Penguin Books Ltd, London.
28. , , . (2012) (SECO), . 22.
29. Montgomery, R. D. (2007) *Dirt: The erosion of Civilizations*, University California Press, Berkeley, p. 172.
30. Muller, H. R., (1993) *Challenges in our time and their consequences for tourism management*, Research institute for leisure time and tourism, Berne.
31. Munasinghe, M. (1993) *Environmental Economics and Sustainable Development*, World bank, Washington, p. 2.
32. , , . (2004) - , .13.
33. , . (2006) , . 158-162.
34. , . (2014) , - , .40-114.
35. , , (2010) , , . 6-8.
36. , , , , . (2011) *IPA-2007-2013*, , .74.
37. Perman, R., Ma, Y., and McGilvray, J. (1996) *Natural resource and Environmental Economics*, London, Longman, p. 86.

38. (2002) , . 19-21.
39. (2009) , . 21.
40. Pretty, J. N. (1995) *Regenerating agriculture: policies and practice for sustainability and self-reliance*, Earthscan publications, London, UK, p. 3-95.
41. Pfeiffer, D.A. (2006) *Eating fossil fuels. Oil, food and the coming crisis in agriculture*, New society publishers, Canada, p. 7.
42. Phillips, A. (1998) *Economic Values of Protected Areas*, The world conservation union, Gland, Switzerland, p. 19.
43. Philips, A. (2002) *Management Guidelines for IUCN Category V Protected Areas*, IUCN, Gland, Switzerland and Cambridge UK, 52-53.
44. Renner, M., Sweeney, S., Kubit, J. (2008) *Green Jobs: Towards Decent Work in a Sustainable, Low-Carbon World*, United Nations Environment Programme, p. 6.
45. Repetto, R. (1986) *World Enough and Time: Successful Strategies for Resource Management*, New Haven, Connecticut: Yale University Press.
46. (2004) , . 172-173.
47. *SARD-M for the Carpathian Convention Member States* (2008) European Academy of Bolzano/Bozen, Italy, FAO and UNEP, p. 15.
48. (2009) , . 33-103.
49. (2007) – , . 108.
50. Hall, M., et al. (2003) *Food tourism around the world: Development, Management and Markets*, Butterworth-Heinemann, Oxford.
51. Haq, M. (1995) *Reflections on Human Development*, Oxford University Press, Oxford, p.76.
52. Herta, T.S., et al. (2003) *Ex-post Evaluation of the Community Initiative LEADER II*, Austrian Institute for Regional Studies and Spatial Planning, Vienna, p. 29.
53. Honey, M., Krantz, D. (2007) *Global Trends in Coastal Tourism*, Stanford University, p. 30.
54. Hussen, A. (2004) *Principles of Environmental Economics*, Rutledge, New York, p. 221.
55. Carbone, G., Yunis, E. (2005) *Making Tourism More Sustainable: A Guide for Policy Makers* World Tourism Organization & United Nations Environment Programme, Madrid, Spain, p. 12.
56. Carter, E.S., Stansfield, J.M. (1994) *British Farming, Changing Policies and Production Systems*, Farming Press Ltd., Ipswich.
57. Cooper, ., Pezold, T. (2011) - , IUCN, Gland, IUCN , . 54-57.
58. *Creating rural indicators for shaping territorial policy* (1994) Organisation for Economic Co-operation and Development - OECD, Paris, p. 15.

59. Crosta, N., Davies, A., Maguire, K. (2006) *The new rural paradigm: Policies and Governance*, OECD Rural policy reviews, Paris, p. 32.

-
1. (2012) „ “ 2001-2012. - - “, . 12.
 2. Bavec, F., Bavec, M. (2011) *Situation, experiences and expectation in agriculture and agri-environmental measures after acceptance of European Common agricultural policy (CAP) in Slovenia*, Proceedings of 46th Croatian and 6th International Symposium on Agriculture, Opatija, Croatia, p. 20-24.
 3. (2009) , . 204.
 4. Batie, S. Sandra, (1990) : , , . 7-8, . 269-270 (, Sandra S. B., (1989) *Sustainable development: Challenges to the profession of agricultural economics*, American journal of agricultural economics, No. 5).
 5. (2007) , , . 161-165.
 6. Bowler, I.R. (2009) *Promoting sustainable agriculture and rural development*, Area studies - Europe, regional sustainable development review, EOLSS, Volume 1, p. 4.
 7. (2007) - , , . 156-158.
 8. Buchenrieder, G., Mollers J. (2006) *A Synthesis of theoretical concepts for analyzing non-farm rural employment*, Paper presented at the International Association of Agricultural Economists Conference, Gold Coast, Australia, p. 5-6.
 9. (2002) , , . 190.
 10. Grieve, J., Weinspach U. (2011) *Capturing impacts of Leader and of measures to improve Quality of Life in rural areas*, The European Evaluation Network for Rural Development, p. 4.
 11. Davis J., Pearce D. (2001) *The Non-Agricultural Rural Sector in Central and Eastern Europe*, Natural Resources Institute, UK, Chatham, p. 2.
 12. Daly, H. (1990) *Toward Some Operational Principles of Sustainable Development*, Ecological Economics, Elsevier, No. 2, p. 3.

13. (2009) „Via-Vita“, p. 71.
14. (2009) „Via-Vita“, p. 12.
15. (2010) Agropress, 2, p. 6.
16. (2001) – AEERT, p. 60.
17. (2002) 6, p. 23.
18. (2008)
19. (2006) 334.
20. (2007) 38-41. – IDA, p. 3-16.
21. (2010) „H.W.E.“, p. 25.
22. Zografos, D. (2008) *Geographical Indications & Socio-Economic Development*, IQsensato, Geneva, p. 11.
23. (2001) p. 65.
24. (2006) – p. 52-53.
25. Jungho, S., & Harrison, S. (2005) *Management Objectives and Economic Value of National Parks: Preservation, Conservation and Development*, Discussion Paper No. 337, School of Economics, The University of Queensland, p. 11.
26. Knight, W. (2006) *Eco-Resorts Turn White Slopes Green*, the New York Times, 19.11.2006, US.
27. (2009) „Via-Vita“, p. 53-55.
28. Khor, M. (1997) *Review and appraise the implementation of Agenda 21*, Earth Summit +5, Special Session of the General Assembly, New York.

29. Madigan, C., (2006) *Chris Madigan on the Environmental Impact of Ski Resorts*, Guardian, 23 Dec. 2006, UK.
30. , . (2003) , , .311.
31. , . (2005) , , “ , ” , .261.
32. Miranowski, A. J. (2004) *Energy consumption in U.S. Agriculture*, presentations in conference “Agriculture as a producer and consumer of energy”, USDA office of energy policy and new uses, p. 4.
33. , . (2013) , , .
34. Munasinghe, M., Lutz, E. (1991) *Environmental – Economic Evaluation of Projects and Policies for sustainable development*. World Bank Working Paper, No. 42., Washington, D.C., USA.
35. Munasinghe, M. (2002) *The sustainomics trans-disciplinary meta-framework for making development more sustainable*, Journal „Sustainable Development”, Vol 5, p. 138.
36. , . (1989) , , , , 62.
37. Pearce, D. (1992) *Economic valuation and the natural world*, Background paper for World development report 1992, Centre for social and economic research on the global environment, London, p. 8-11.
38. , . (2013) , , .
39. Petersen, J.E., Feehan, J. (2003) *Agri-environmental programmes and the candidate countries*, International Conference: EU: CAP and Enlargement – An Opportunity for Nature and Environment, Institute for International and European Environmental Policy, Potsdam, Germany, p. 2-3.
40. , . (2006) , , , .13.
41. Pielke, M., (2009) *Community Policies for the Development of Rural Areas*, European Commission Directorate General for Agriculture and Development, Zagreb, p. 2.
42. Pimental, D., Wilson, A. (2004) *World Population, Agriculture and Malnutrition*, published in World Watch Magazine, Volume 17, No 5.
43. , . (2010) : “ ” , , , 2430, . ., “ , ” , .17.
44. Reed, S. M., et al. (2009) *Who’s in and why? A typology of stakeholder analysis methods for natural resource management*, Journal of Environmental Management, Elsevier, p. 1934.
45. , .. , . (2010) , , , .84.
46. , .. , .. , . (1991) *Problems of soil degradation in Yugoslavia*, Vol. 40, No.3, .
47. , .. , . (2010) , , , “ ” , , .22.

48. Solow, R. (1974) *The Economics of Resources or the Resources of Economics*, American Economic Association, American Economic Review, Vol.64., No. 2, p. 1-13.
49. Solow, R. (1986) *On the Intergenerational Allocation of Resources*, Scandinavian Journal of Economics, Vol 88, No. 1, p. 144.
50. Solow, R. (1992) *An Almost Practical Step toward Sustainability*, Invited lecture on the occasion of the 40th anniversary of Resources for the future, Washington, DC.
51. Tonge, V. (2007) *A Case Study of Lech, Austria, Examining Effective Destination Management Strategies in Ski Resort*, International Centre for Responsible Tourism.
52. Farrell, J. (2009) *Rural power: The Key to Sustainability*, Eastern Oregon Forestry Newsletter, Oregon State University, p. 2.
53. Hartwick, J. M. (1977) *Intergenerational equity and the Investing of Rents from Exhaustible Resources*, American Economic Review, No. 67, American Economic Association, p. 972-974.
54. , ., et al. (2007) , , . 4.
55. , . (2009) *Cost-benefit* , Business Start-up centre, , . 27-52.
56. , „ , . (2012) „ “ „ – “ , „ „ ; „ , . 19.

-
1. *Agenda 21* (1992) United Nations Conference on Environment and Development (UNCED) held in Rio de Janeiro, Brazil.
 2. *Agenda 2000 – For a stronger and wider Union* (1997) European Commission, p. 29.
 3. , „ - (2007)
 4. (2009) , , . 3-11.
 5. *A Framework for Indicators for the Economic and Social Dimensions of Sustainable Agriculture and Rural Development* (2001) European Commission Agriculture Directorate-General, Brussels, p. 8-9.
 6. *Background Information on Environment and Tourism in the Context of Sustainable Development* (1994) European Commission, DG XI Environment, Brussels.
 7. *Biosphere reserves: The Seville Strategy and the Statutory Framework of the World Network* (1996) UNESCO, Paris, Article 1-3.
 8. (2013)
 9. , (1997) „ „ ; .

10. *Perspectives for the Common Agricultural Policy* (1985) Commission of the European Communities, Brussels, p. 49.
11. *Guide How to produce a succinct description of a SARD Good Practice* (2006) FAO and SEI, Rome, p. 2.
12. *Directions towards sustainable agriculture* (1999) Commission of the European communities, Brussels, p. 9-12.
13. *Draft Declaration on Guiding Principles for Sustainable Development* (2005) Commission of the European communities, Brussels, p. 4-6.
14. *Environmental management, The ISO 14000 family of International Standards* (2009) International Organization for Standardization, p. 4-10.
15. *Environment: Celebrating 20 years of EU nature protection* (2012) European Commission – Press release, p. 2.
16. *European Charter for Sustainable Tourism in Protected Areas* (2010) EUROPARC Federation, Regensburg, Germany, p. 4.
17. (2009) „ „,
18. 36/2009, „ 4, 27 34. (1994) „ „, 71/94,
19. (2010) „ „,
20. 18/2010“, „ 3. (2013) „ „,
21. „, 135/04 36/09, „ 3. (2009) „ „,
22. 36/2009, „ 2 32. (2009) „ „,
23. „ „ (2007)
24. Habitat. „ „ (2013)
25. *Instrument for pre-accession assistance (IPA) revised multi-annual indicative financial framework for 2011-2013* (2010) European commission, Brussels, p. 6-10.
26. - - (2007) -IDA, „ . 2.
27. *LEADER* (2012) „ „, ECAS-European Citizen Action Services, Brussels, . 4.
28. (2011) UN Joint Programme „Sustainable Tourism for Rural Development“, funded by the Spanish MDG Achievement Fund, „ . 50-125.
29. (2007) „ „ . 62-144.

30. *Millennium Declaration* (2000) United Nations, New York - Article I.
31. *National and Regional Tourism Planning: Methodologies and Case Studies* (1994) World Tourism Organisation - WTO, Madrid.
32. (2008)
33. 57/2008, . 8-10. 2010-2013 (2009) , . 23-58.
34. (2012) , . 8-14.
35. 2008 (2009) , . 212-213.
36. , 2012. (2012) , . 185-186.
37. *Our Common Future, Report* (1987) World Commission on Environment and Development, Oxford University Press, Oxford.
38. ” “, (2000) , . 90-155.
39. *Plan of implementation of the world summit on sustainable development* (2002) The World Summit on Sustainable Development, Johannesburg, South Africa.
40. , ” - “ (2007)
41. , . 4. - - (2010)
42. , . 25. , 2009-2013. (2009) , . 29.
43. 2012., (2013) , . 30-32.
44. , 2002. . 2, (2003) , .
45. , 2002. . 5, (2003) , .
46. (1992) ,, “, 30/92, 2.
47. (2012) Control Union Danube, Member of Control Union World Group, . 15.
48. , “, 66/94, 3/95 31/2005.
49. 2007.-2013., IPA - (2007) , . 10-31.

50. *Proposal for a Council Regulation on support for rural development by the European Agricultural Fund for Rural Development, COM (2004) 490 final*, European Commission, Brussels.
51. „ (2009) „
 „, .16/2009, , .24-193.
52. 2011. (2012)
 , , .40-41.
53. *Report on the eighth session CSD (2000)* Commission on Sustainable Development, Economic and Social Council, New York, p. 21.
54. *Report: Our Common Future*, (1987) World Commission on Environment and Development, Oxford University Press, Oxford, Chapter 2.
55. *Rio declaration on environment and development* (1992) UN Conference on environment and development, Rio de Janeiro.
56. *Rural Development in the European Union – Statistical and Economic Information* (2010) European Union, Directorate General for Agriculture and Rural Development, p 12-27.
57. *Rural development in the European Union - Statistical and economic information* (2011) European Union, Directorate-General for Agriculture and Rural Development, p. 41-225.
58. *Rural tourism in Europe: Experiences and perspectives – Conclusions* (2002) WTO seminar, Belgrade, p. 7.
59. *Serbia and Montenegro: Poverty reduction strategy paper for Serbia* (2004) International Monetary Fund, Staff country reports, Washington, p. 179.
60. *Situation and prospects for EU agriculture and rural areas* (2010) European Commission, Directorate-general for agriculture and rural development, p. 13.
61. *Stockholm Declaration* (1972) United Nations Conference on the Human Environment, Stockholm, principle 1.
62. (2003) , ,
 .7.
63. (2005) Horwath Consulting
 , .49-76.
64. (2008)
 , , .3-20.
65. (2008) USAID, , .
 50-56.
66. (2000) , ,
 , 24-108.
67. (1992) ,
 , .40-157.
68. *Sustainable Agriculture and Rural Development in Mountain Regions (SARD-M)* (2008) FAO, OECD DAC, UNDESA, p. 1.
69. *Sustainable Europe for a Better World: A European Union Strategy for Sustainable Development* (2001) Commission's proposal to the Gothenburg European Council.
70. *Towards a Global Partnership for Sustainable Development* (2002) Commission of the European Communities, Brussels, p. 15.

71. *Towards Quality Rural Tourism* (1998) European Commission DGXXIII, Tourism Directorate, Brussels, p. 83-84.
72. *The EU Rural development policy: Facing the challenges* (2008) European Commission, Directorate-General for Agriculture and rural development, p. 6.
73. *The leader approach: a basic guide* (2006) European Commission, Office for Official Publications of the European Communities, Luxembourg, p. 6-9.
74. *The Local Agenda 21 Planning Guide: An Introduction to Sustainable Development Planning* (1996) The International Council for Local Environmental Initiatives (ICLEI) and United Nations Environment Programme (UNEP), Toronto, Canada, p. 8-98.
75. *The Practice to Policy Continuum in Sustainable Agriculture and Rural Development (SARD): a Civil Society Reflection on the Importance of Collaborations of Major Groups and Governments to Advance SARD* (2008) Commission on Sustainable Development, Sixteenth Session, New York, p. 10.
76. *The Treaty establishing the European Economic Community* (1957) European Union law, Rome, article 33.
77. *The future we want* (2012) Outcome document The Rio+20 Conference UN on sustainable development, Rio de Janeiro, p. 25.
78. *The Cork declaration – a living countryside* (1996) The European Conference on Rural Development, Cork, Ireland, point 1-10.
79. *Fact Sheet, EU Rural development policy 2007-2013* (2006) Office for official publications of the European Communities, Luxembourg.
80. , , 2002. , 9 (2004) ,
81. (2001) ,, “, 45/2001, .
82. 2011. (2011) ,, “, 13/11, .
83. 2011. (2011) ,, “, 56/11, .
84. (2012) ,, “, 31/2012, , 3-5.
85. 2013. (2013)
86. *Fact Sheet EU Rural development policy 2007-2013* (2006) Office for official publications of the European Communities, Luxembourg, p. 8.
87. <http://1billiontourists.unwto.org>, 09.09.2013. .
88. http://europa.eu/about-eu/eu-history/founding-fathers/pdf/sicco_mansholt, 10.01.2013. .
89. <http://mdgs.un.org/unsd/mdg/data>, 20.07.2012. .

90. <http://cooperation.unwto.org/supports-rural>, 02.08.2013.
91. *Country Report Serbia* (2006) ACROTRASS consortium, Study on the State of Agriculture in Five Applicant Countries, p. 6.
92. *Council Regulation (EC) No 2078/92* on agricultural production methods compatible with the requirements of the protection of the environment and the maintenance of the countryside.
93. *Council Regulation (EC) No 1698/2005* on support for rural development by the European Agricultural Fund for Rural Development (EAFRD).
94. *World Conservation Strategy (WCS): Living Resource Conservation for Sustainable Development, (1980)* IUCN, section 7.
95. www.agropress.org.rs/tekstovi/17494, 10.09.2013.
96. www.balkanmagazin.net/hrana/cid143-29444, 04.02.2013.
97. www.blbra.ca/faq/benefits-of-a-biosphere-reserve, 27.10.2013.
98. www.blic.rs/vesti/srbija/monahinje-ozivele-manastir-Kovilje, 03.03.2013.
99. www.bsigroup.com/Documents/iso-14001-client-manual-UK, 27.03.2013.
100. www.vremekupovine.rs/140-organska-proizvodnja, 03.02.2013.
101. www.golija.biz, 01.03.2013.
102. www.golija-turizam.com, 14.12.2013.
103. www.europa.rs/projects/Ruralno_ozivljavanje, 18.03.2013.
104. www.zzps.rs/novo/zastita_prirode_osnovni_podaci, 17.11.2012.
105. www.ivanjica.gov.rs/ivanjica/poljoprivreda, 28.11.2013.
106. www.ivanjica.gov.rs/javna-preduzeca/srpski/ivanjica, 27.11.2013.
107. www.ivanjica.gov.rs/206-organska-proizvodnja, 02.02.2013.
108. www.johannesburgsummit.org/documents, 05.02.2012.
109. www.kv-rda.org/decembar10.htm, 05.11.2013.
110. www.kraljevskiodmor.com, 08.03.2012.
111. www.lechzuers.com/development, 10.04.2013.
112. www.mondiserbia.rs/documents/ecocert, 08.10.2013.
113. www.novosti.rs/Koridor-11, 11.10.2013.
114. www.np-put.rs/standardi, 01.04.2013.
115. www.organica.rs, 01.10.2013.
116. www.organic-world.net/fileadmin/documents/yearbook-2012/fibl-ifoam-survey-data-2010-global, 01.05.2013.
117. www.rpkns.com/en/aktuelno-poljoprivreda/1412, 04.10.2013.
118. www.rtv.rs/voda-sa-golije, 21.06.2013.
119. www.rts.rs/page/stories/1094848/dani+jorgovana, 09.03.2013.
120. www.saneko98.com/.../aktivnosti%202008, 05.04.2013.
121. www.selo.co.rs/page.php?id=37, 24.07.2013.
122. www.sitiunescoadriatico/.../Svamesta/Studenica, 01.11.2013.
123. www.skijanje.rs/golija_nove_skijaske_staze, 06.12.2013.
124. www.sombor.rs/eko-skola-golija-studenica, 02.11.2013.

125. www.spc.rs/sr/dani-kraljice-jelene, 11.03.2013.
126. www.totalportal.rs/ekonomija/povezane-vesti/403515, 07.04.2013.
127. www.turizam.mfp.gov.rs, 10.03.2012.
128. www.ekapija.com/website/sr/page/Program-razvoja-opstina-u-jugozapadnoj-Srbiji-PRO, 05.10.2013.
129. www.unesco.org/new/en/.../biosphere-reserves/world-network, 03.11.2013.
130. www.unicef.org/newsline/02pr52wssd, 07.02.2012.
131. www.un.org/esa/dsd/resources/res_docukeyconf_eartsumm.shtml, 10.02.2012.
132. www.fao.org/economic/esw/programmes/the_sard_initiative/en, 03.08.2012.
133. www.citypopulation.de/serbia, 25.09.2013.
134. www.councilofeurope.int/transromanica, 16.03.2013.
135. www.worldtourism.org/sustainable/concepts.htm, 13.09.2013.

(CV)

22.06.1973.

1992/93.

8,06, 09.04.1997. 10.

1997.

1997/98.

8,62

218, 19.03.2005.

(),

()

().

: *Microsoft*

Word, Microsoft Excel, Internet.



1.

,

,

” “

•

•

,

,

,

,

,

•

•

,

.

, 06.06.2014.

: _____

:

M. MURKOLUT



2.

К

: _____

: / _____

: _____,

” “ _____

: _____

,

,

, 06.06.2014.

: _____

:
M. MURKOBUT



3.

” ”
, ,
:

“ ”

(Creative Commons),

j

- 1.
2. _____ - _____
3. — —
4. — —
5. —
6. —

(;)

, 06.06.2014.

: _____

M. MURKOBUT